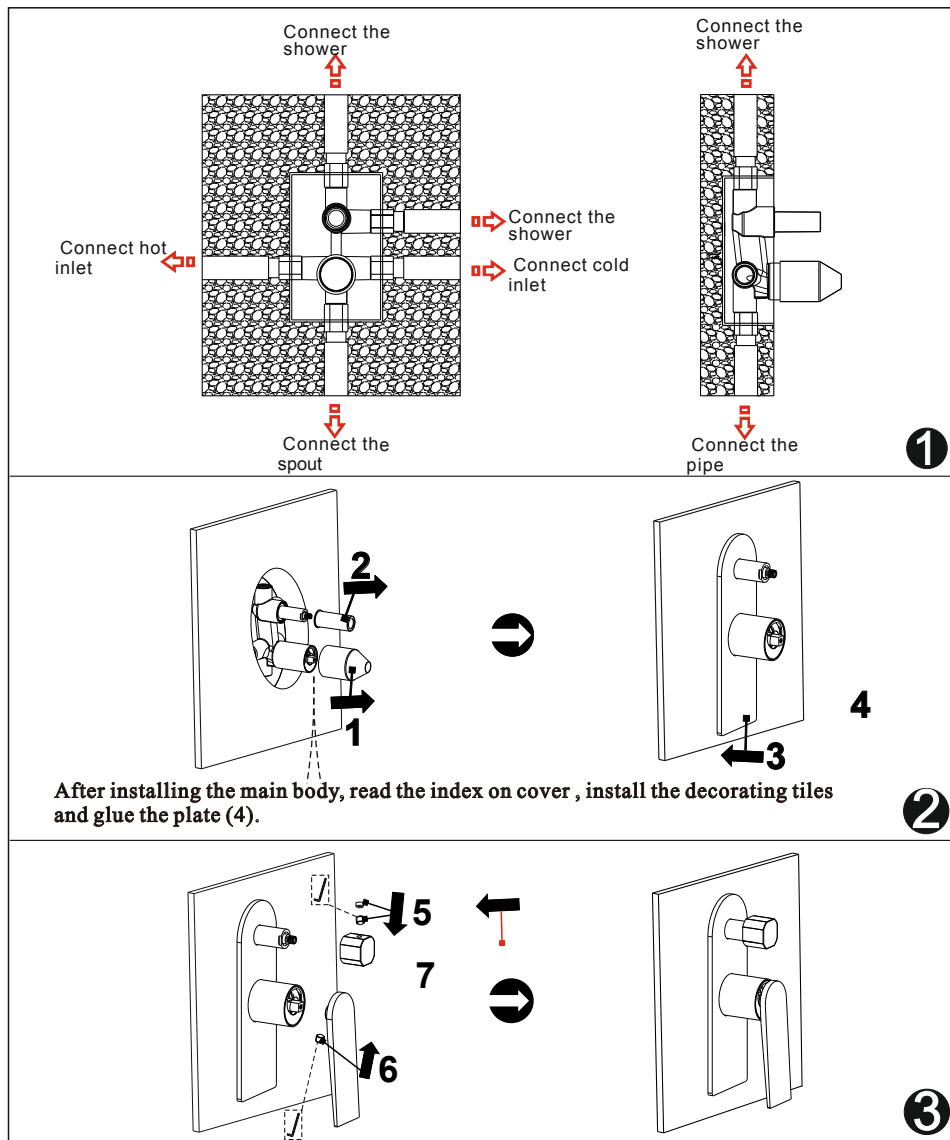




## Installation Step



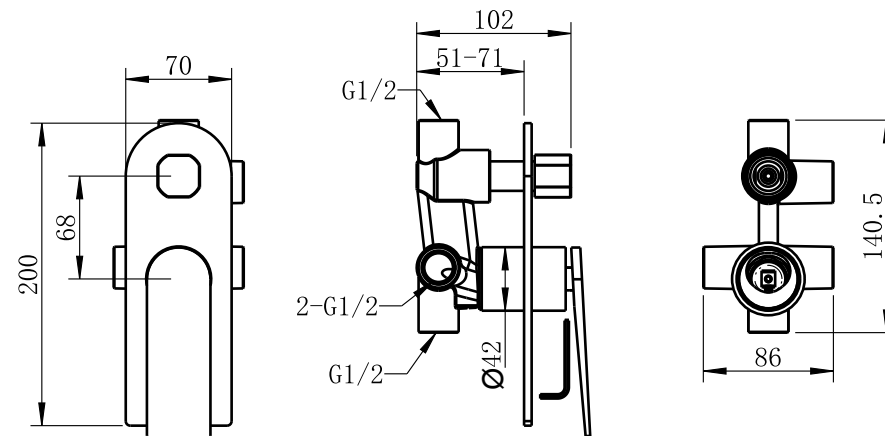
✱ Attention: the inner radii of the G1/2 connection pipe is not less than  $\phi 13\text{mm}$ .

✱✱ Read the Installation Fig and confirm the installing position.

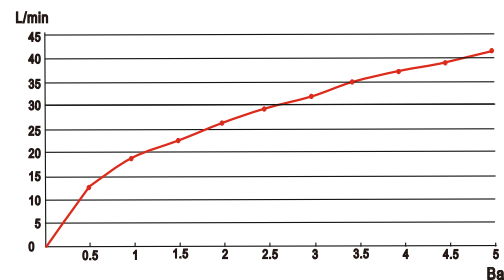
✱✱✱ Test:

Open the supply pipes, close the ceramic cartridge and check the connections for leakage; open the ceramic cartridge and check the smooth water flow. Decorate the wall after checking and remove the safe cover. Install the escutcheon and handle.

## Installation Fig



## Flow rate Curves



Test pressure: 1.5MPa (15bar)

Flow pressure:

Min 0.1MPa

Max 1.5MPa

Recommended pressure:

0.1MPa to 0.7MPa (1 to 7 bar)

## Note

1. Ensure proper cleaning of the water supply pipe before installation to avoid any jammed.
2. The cold-water supply must be connected on the right and the hot-water supply must be connected to the left.
3. Check the installation dimensions according to the Figure and ensure it is installed correctly.
4. Hot-water inlet temperature must not be over  $80^{\circ}\text{C}$ .