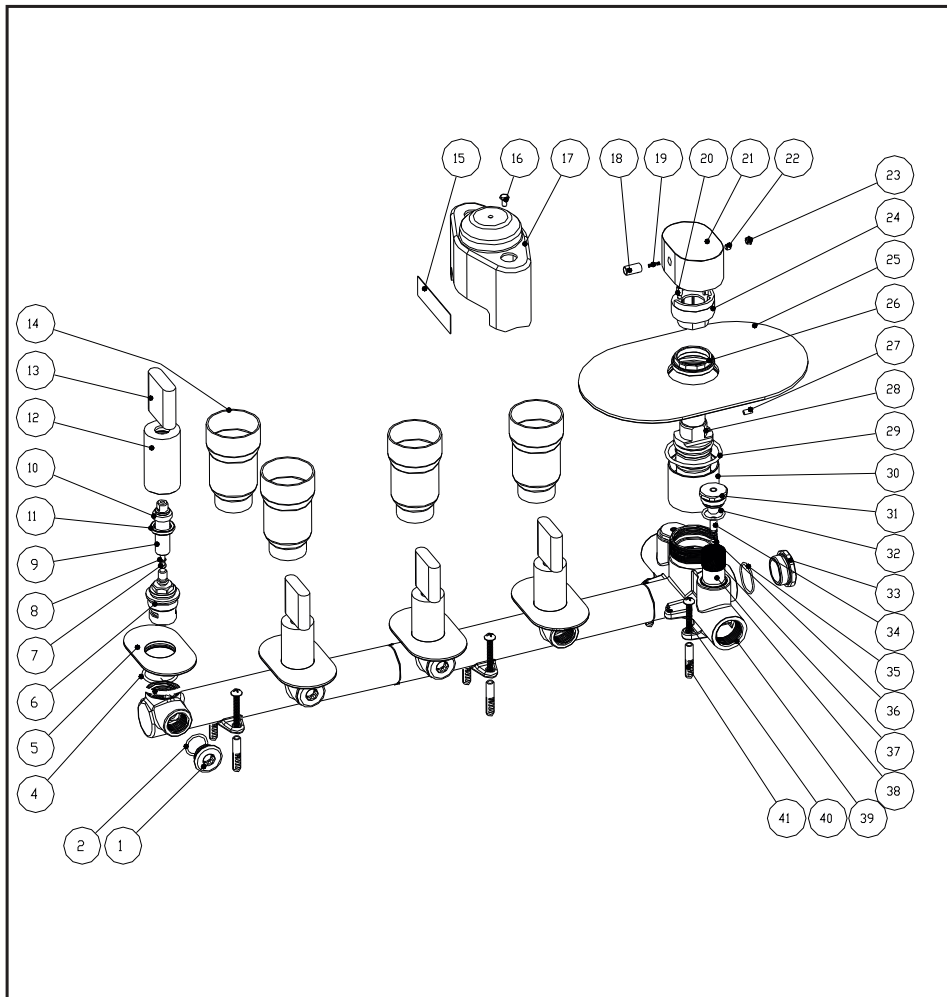


# Concealed thermostatic module with 4 volume controls

## Installation Instruction

Please read this instruction carefully to avoid any difficulty during installation.



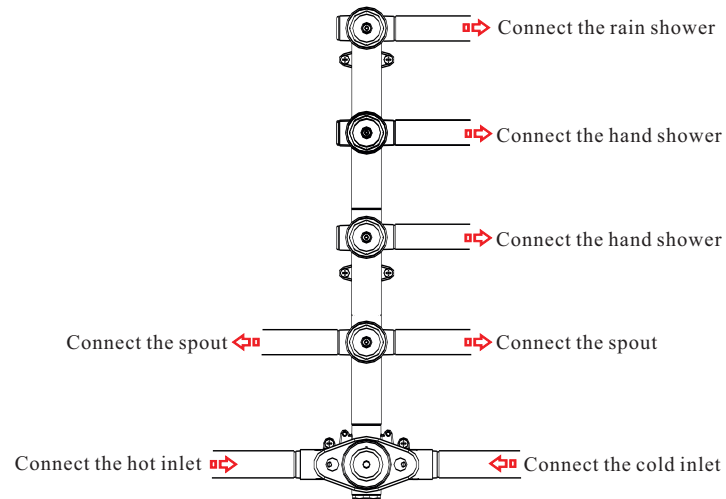
## Components List

No .	Component	Quantity
1	Stopper	3
2	O-ring	4
4	Sealing strip	4
5	Escutcheon	4
6	Ceramic head part	4
7	Cross-head screw	4
8	Spring shim	4
9	Longer rod	4
10	Plastic ring	4
11	Fastening screw	4
12	Decorating pipe	4
13	Safe cover	4
14	Index	4
15	Cross-head screw	1
16	Cross-head screw	1
17	Safe cover for body	1
18	Decorating knob	1
19	Spring	1
20	Setting pin	1
21	Handle	1
22	Female allen screw	1
23	Plug	1
24	Fastening sleeve	1
25	Plate	1
26	Fastening nut	1
27	Setting pin	1
28	Spindle	1
29	Sealing strip	1
30	Cover	1
31	Fastening screw	2
32	O-ring	2
33	Stopper	1
34	Adjusting screw	2
35	O-ring	1
36	O-ring	2

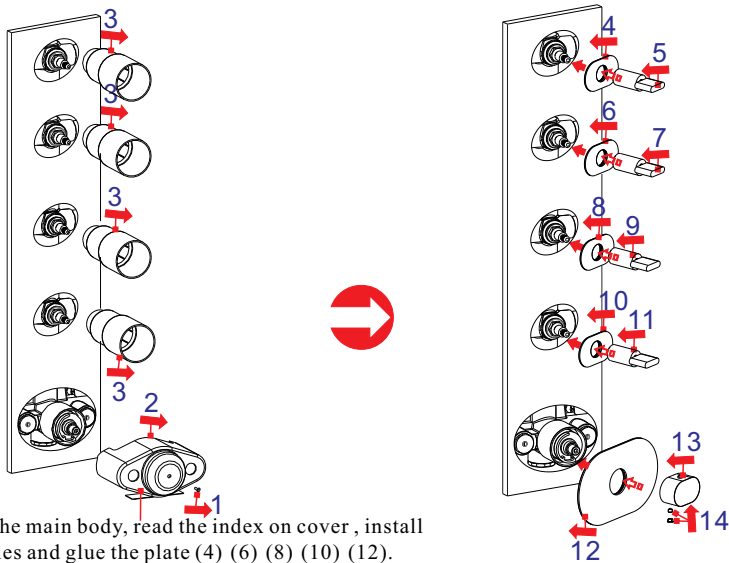
No .	Component	Quantity
37	Filter	2
38	Check valve	2
39	Main body	1
40	Cross-head screw	6
41	Plastic sleeve	6

## Installation Step

1

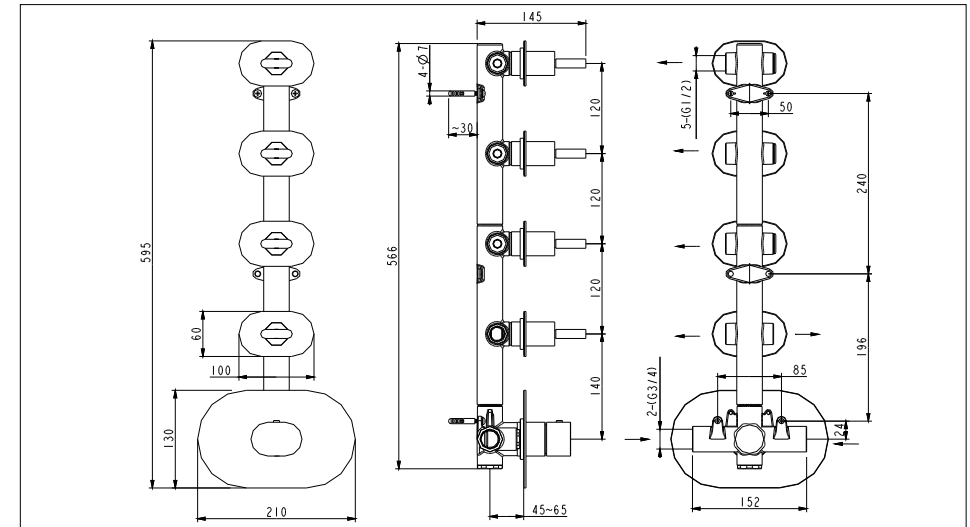


2

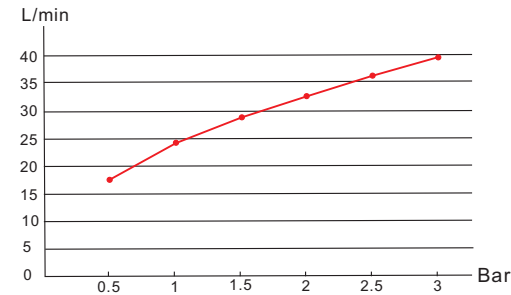


After installing the main body, read the index on cover, install the decorating tiles and glue the plate (4) (6) (8) (10) (12).

## Installation Fig



## Flow rate Curves



Test pressure: 1.6MPa (16bar)

Flow pressure:

Min 0.05MPa

Max 1.60MPa

Recommended pressure:

0.1MPa to 0.8MPa (1 to 8 bar)

## Note

1. Open the supply pipes, close the ceramic cartridge and check the connections for leakage; open the ceramic cartridge and check the smooth water flow. Decorate the wall after checking and remove the safe cover. Install the escutcheon and handle.
2. Ensure to clean the water supply pipe before installing to avoid being jammed.
3. The cold-water supply must be connected on the right and the hot-water supply on the left.
4. Check the installing dimension according to the Figure and ensure it is installed correctly.
5. Hot-water inlet must not be over 80°C.