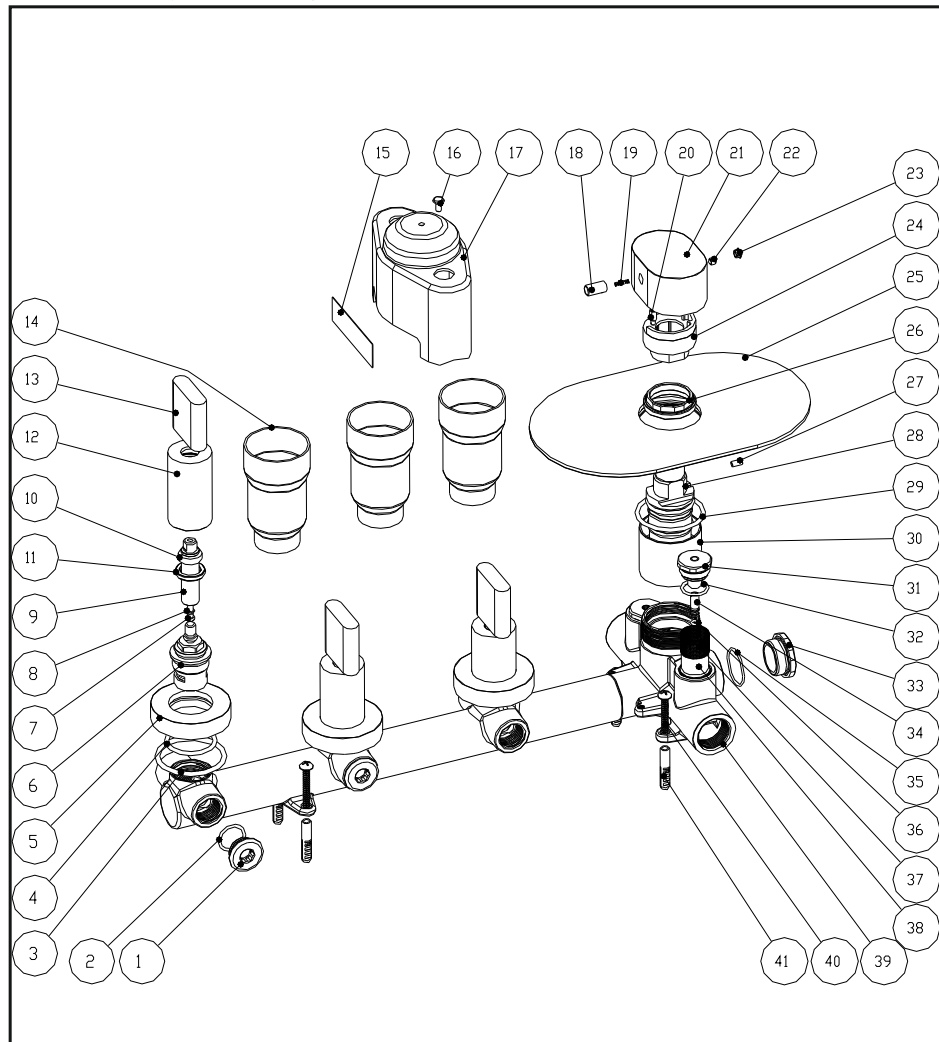


CONCEALED THERMOSTATIC MODULE WITH 3 VOLUME CONTROLS

Installation Instruction

Please read this instruction carefully to avoid any difficulty during installation.



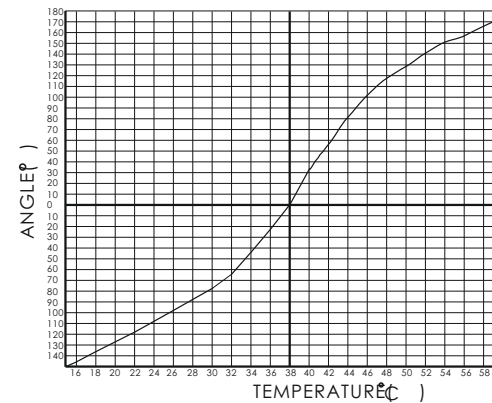
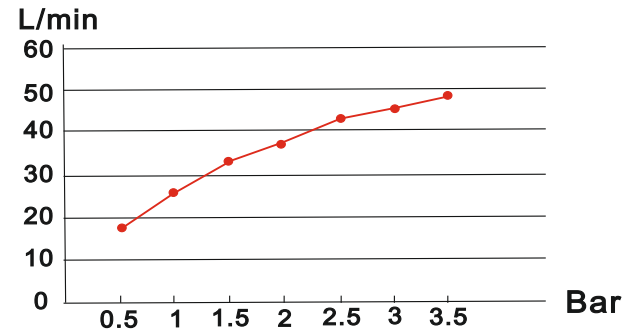
Components List

No.	Component	Material	Quantity
1	Stopper	BRASS	2
2	O-ring	NBR	2
3	O-ring	NBR	3
4	Sealing strip	NBR	3
5	Escutcheon	BRASS	3
6	Ceramic head part		3
7	Cross-head screw	S.S304	3
8	Spring shim	S.S304	3
9	Longer rod	BRASS	3
10	Plastic ring	TEFLON	3
11	Fastening screw	BRASS	3
12	Decorating pipe	BRASS	3
13	Safe cover	BRASS	3
14	Index	PE	3
15	Cross-head screw	PAPER	1
16	Cross-head screw	S.S304	1
17	Safe cover for body	PP	1
18	Decorating knob	BRASS	1
19	Spring	S.S304	1
20	Setting pin	BRASS	1
21	Handle	BRASS	1
22	Female allen screw	S.S304	1
23	Plug	ABS	1
24	Fastening sleeve	ABS	1
25	Plate	BRASS	1
26	Fastening nut	BRASS	1
27	Setting pin	S.S304	1
28	Spindle		1
29	Sealing strip	NBR	1

Components List

No.	Component	Material	Quantity
30	Cover	BRASS	1
31	Fastening screw	BRASS	2
32	O-ring	NBR	2
33	Stopper	BRASS	1
34	Adjusting screw	BRASS	2
35	O-ring	NBR	1
36	O-ring	NBR	2
37	Filter		2
38	Check valve		2
39	Main body		1
40	Cross-head screw	S.S304	4
41	Plastic sleeve	PE	4

Flow rate Curves



Test pressure: 1.6MPa (16bar)

Flow pressure:

Min 0.05MPa

Max 1.60MPa

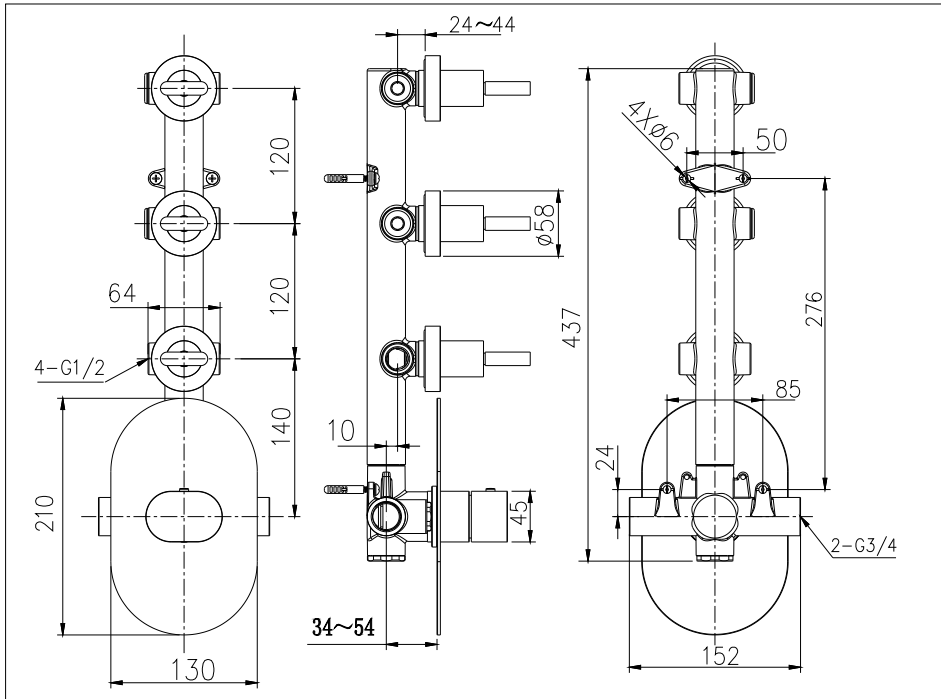
Recommended pressure:

0.1MPa to 0.8MPa (1 to 8 bar)

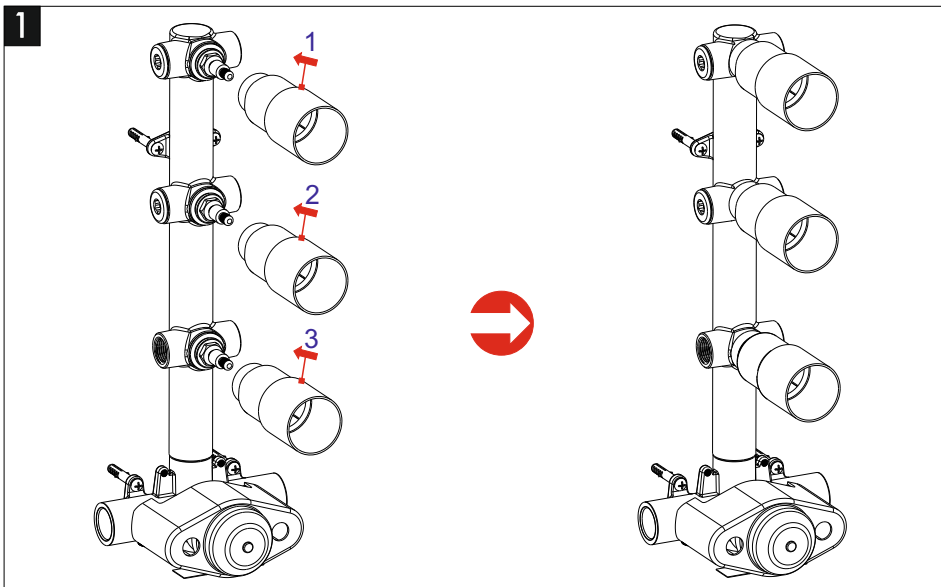
Note

1. Ensure to clean the water supply pipe before installing to avoid being jammed.
2. The cold-water supply must be connected on the right and the hot-water supply on the left.
3. Check the installing dimension according to the Figure and ensure it is installed correctly.
4. Hot-water inlet must not be over 80°C.

Installation Fig

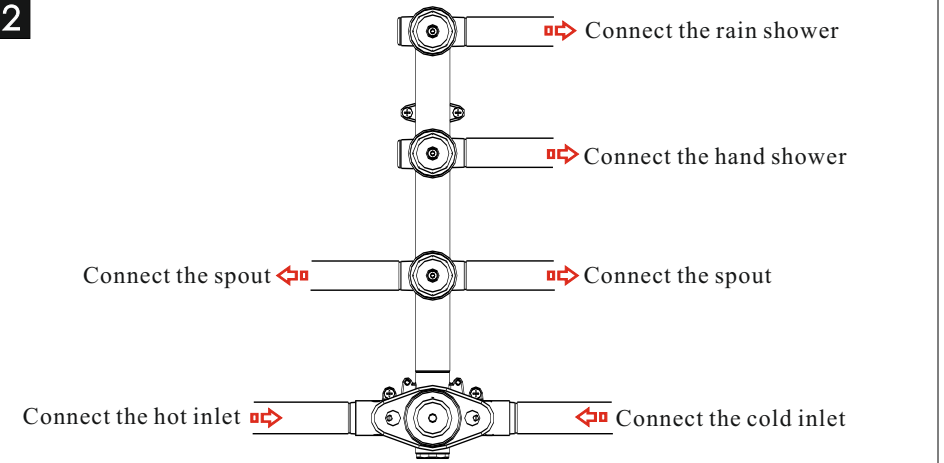


Installation Step

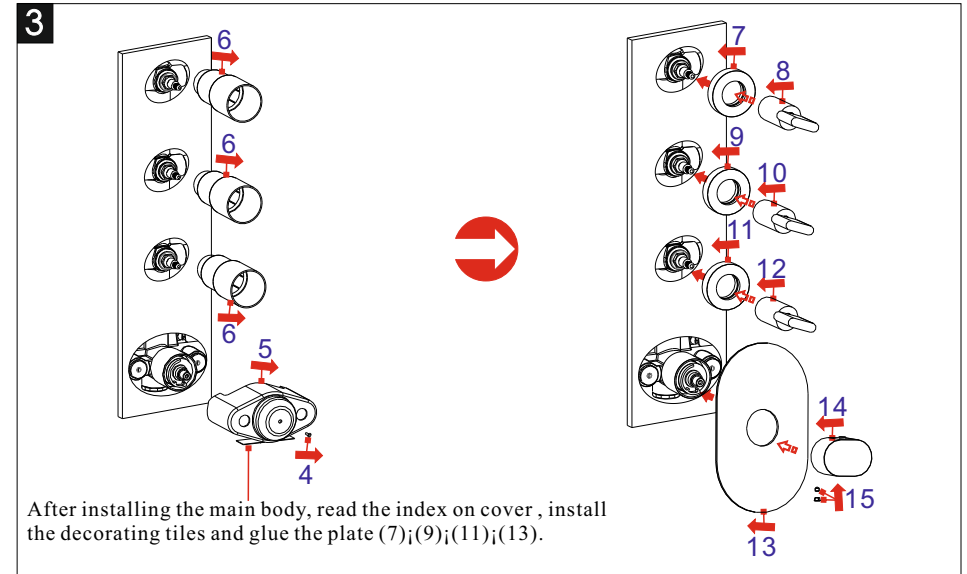


04 OF 06

2



3



* Read the Installation Fig and confirm the installing position.

** Attention: the inner radii of the G1/2 connection pipe is not less than $\phi 13$ mm.

*** Make sure that index on the escutcheon meets the connectors of outlets.

Test:

Open the supply pipes, close the ceramic cartridge and check the connections for leakage; open the ceramic cartridge and check the smooth water flow. Decorate the wall after checking and remove the safe cover. Install the escutcheon and handle.

05 OF 06

PZMF110400
2008.01.09