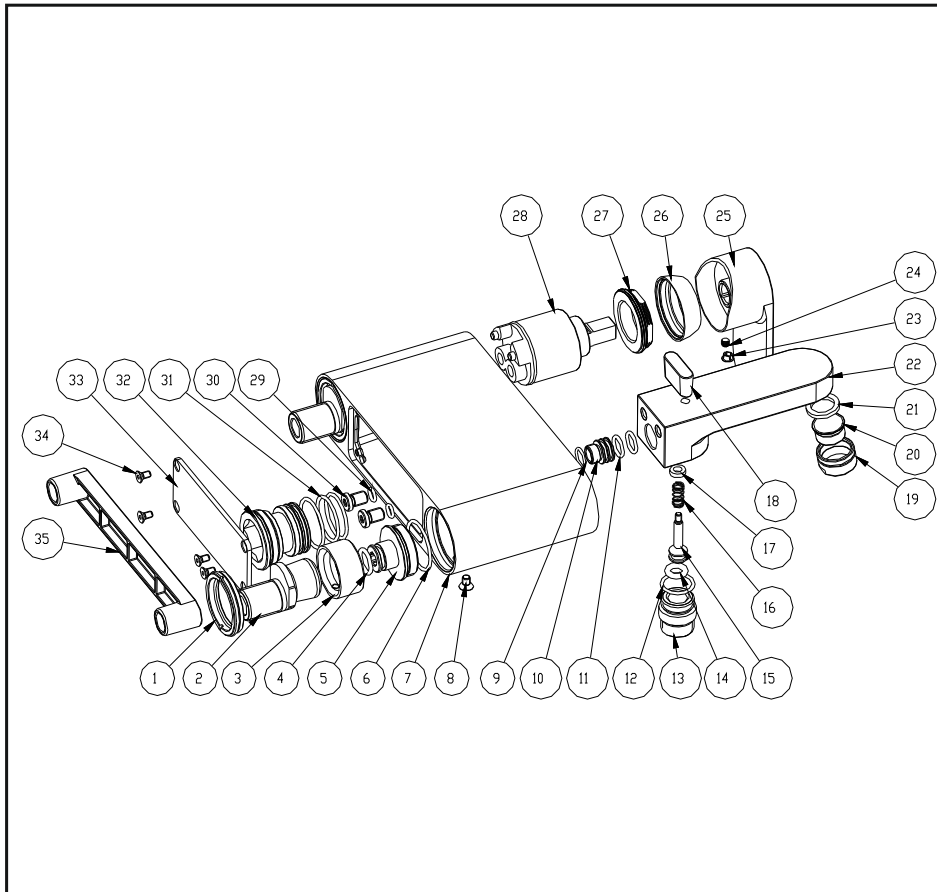


Bath/shower mixer

Installation Instruction

Please read this instruction carefully so as to avoid the installation difficulty.

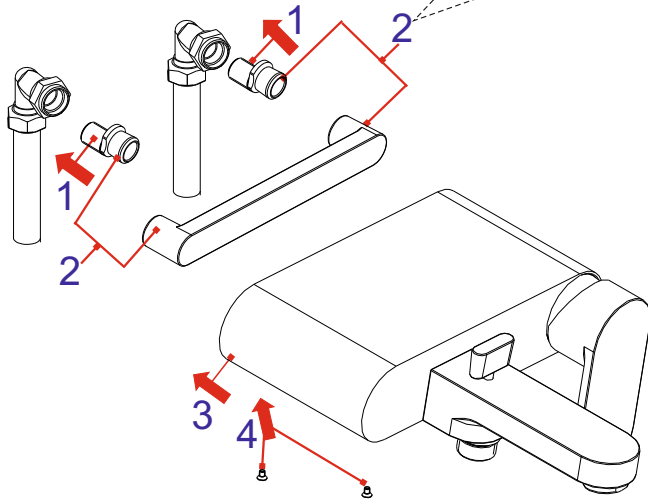


Components List

No.	Component	Material	Quantity
1	Union	BRASS	2
2	S-union	BRASS	2
3	Union	BRASS	2
4	O-ring	NBR	2
5	Union	BRASS	2
6	O-ring	NBR	3
7	Main body	BRASS	1
8	Female allen screw	S.S304	2
9	O-ring	NBR	1
10	Union	BRASS	1
11	O-ring	NBR	2
12	O-ring	NBR	1
13	Union	BRASS	1
14	O-ring	NBR	1
15	Center rod	BRASS	1
16	Spring	S.S304	1
17	Y-seal	NBR	1
18	Knob	ZN	1
19	Aerator coat	BRASS	1
20	Aerator core		1
21	Flat washer	NBR	1
22	Spout	BRASS	1
23	Plug	ABS	1
24	Female allen screw	S.S304	1
25	Handle	BRASS	1
26	Cap	BRASS	1
27	Cartridge fastener	BRASS	1
28	Ceramic cartridge		1
29	O-ring	NBR	2
30	Connecting screw	BRASS	2
31	O-ring	NBR	2
32	Stopper	BRASS	1
33	Plate	ABS	1
34	Female allen screw	S.S304	4
35	Adjusting rod	ABS	1

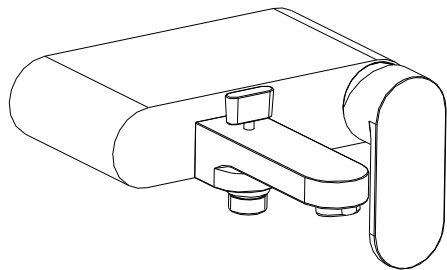
Installation Step

1. According to the fig, install the S-unions and make sure the distance between them.
2. Keep two S-unions in one level.
3. Inspect the distance between two S-unions with the adjusting rod.

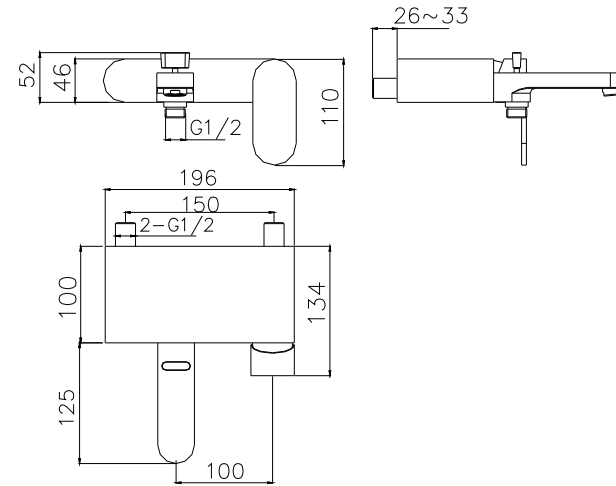


1

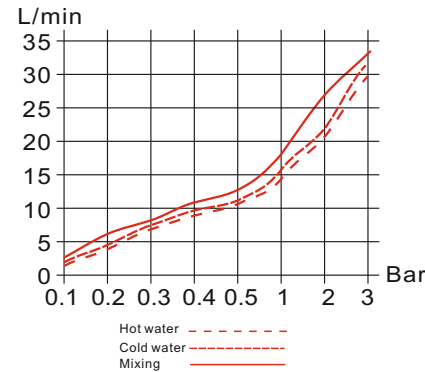
2



Installation Fig



Flow rate Curves



Test pressure: 1.6MPa (16bar)

Flow pressure:

Min 0.05MPa

Max 1.60MPa

Recommended pressure:

0.1MPa to 0.8MPa (1 to 8 bar)

Note

1. Ensure to clean the water supply pipe before installing to avoid being jammed.
2. The cold-water supply must be connected on the right and the hot-water supply on the left.
3. Check the installing dimension according to the Figure and ensure it is installed correctly.
4. Hot-water inlet must not be over 80°C.