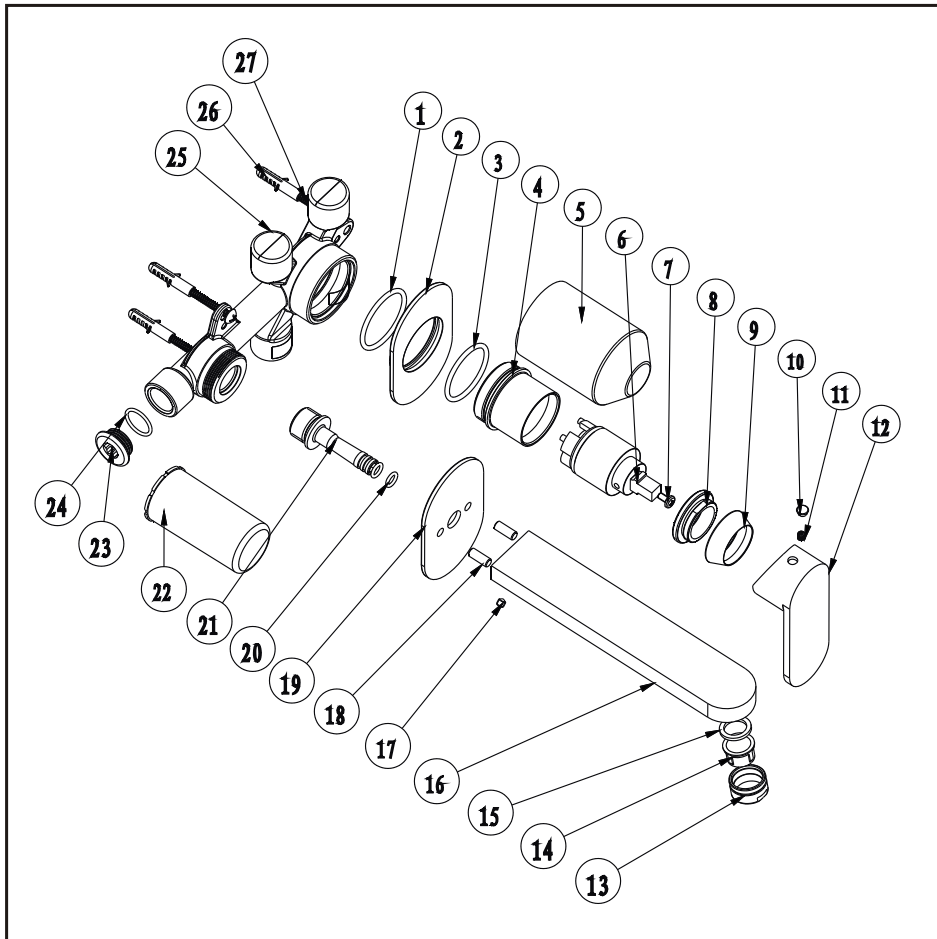


Wall mounted basin mixer

Installation Instruction

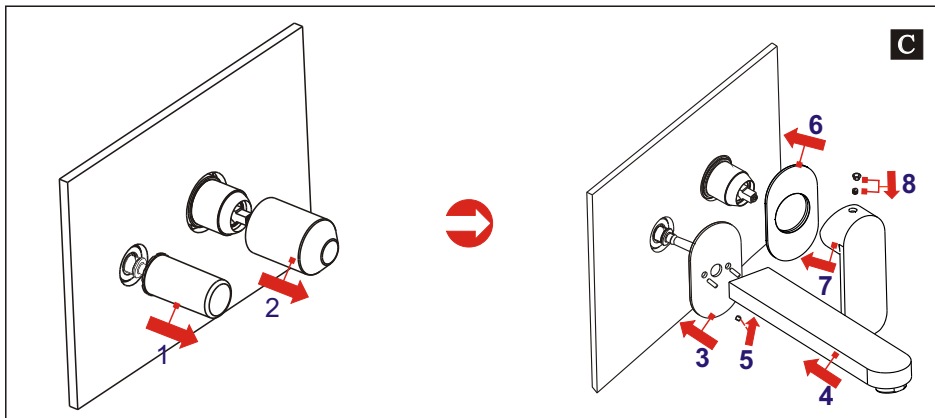
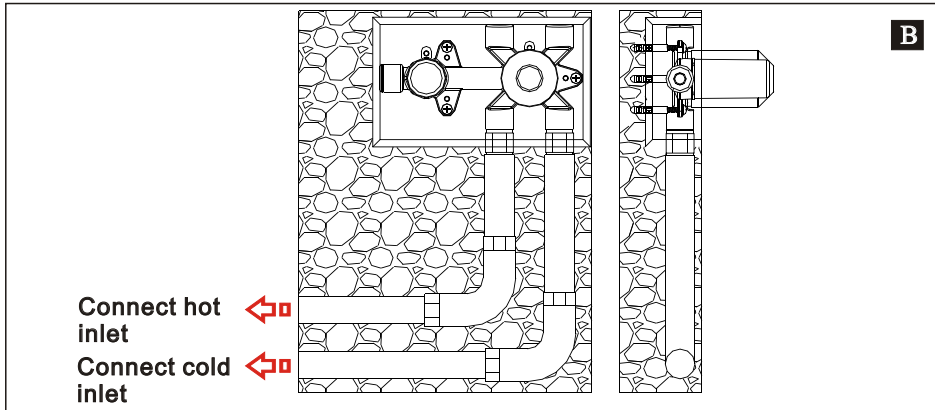
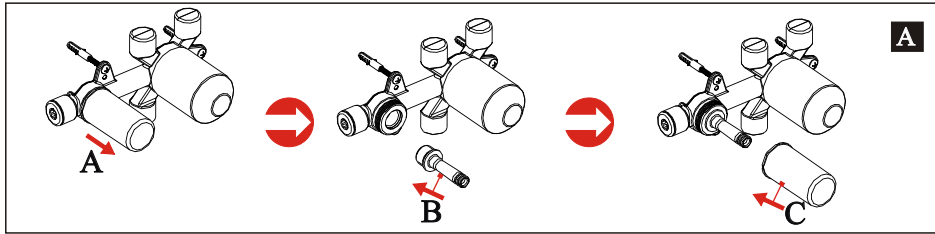
Please read this instruction carefully to avoid any difficulty during installation.



Components List

No.	Component	Material	Quantity
1	Sealing strip	NBR	1
2	Plate		1
3	O-ring	NBR	1
4	Cover	BRASS	1
5	Safe cover for body	PE	1
6	Ceramic cartridge		1
7	Cross-head screw	S.S304	1
8	Cartridge fastener	BRASS	1
9	Cap	BRASS	1
10	Plug	ABS	1
11	Female allen screw	S.S304	1
12	Handle	BRASS	1
13	Aerator coat	BRASS	1
14	Aerator core		1
15	Flat washer	NBR	1
16	Spout	BRASS	1
17	Screw	S.S304	2
18	Setting pin	S.S304	2
19	Plate	BRASS	1
20	O-ring	NBR	2
21	Connecting pipe	BRASS	1
22	Safe cover for diverter	ABS	1
23	Stopper	BRASS	1
24	O-ring	NBR	1
25	Main body	BRASS	1
26	Plastic sleeve	PE	3
27	Cross-head screw	S.S304	3

Installation Step

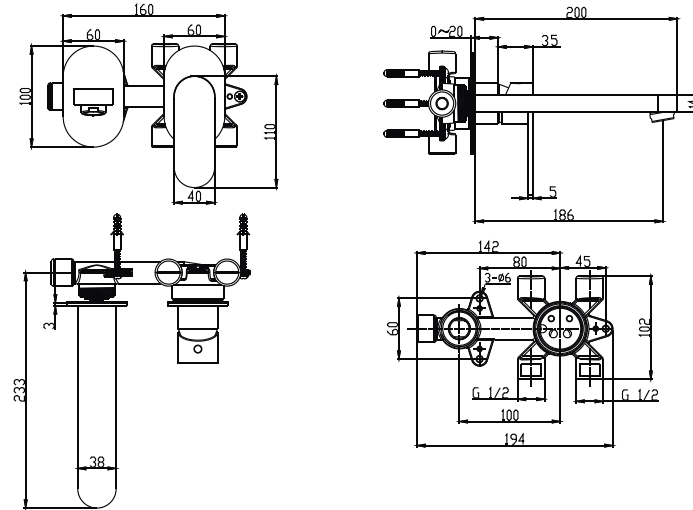


✱ See the fig for the position of the valve and inlet pipes.

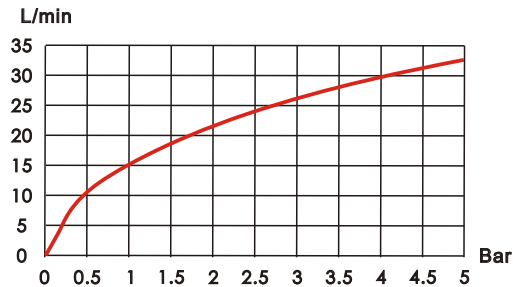
✱✱ Test:

Open the supply pipes, close the ceramic cartridge and check any leakage; open the ceramic cartridge and check the smooth water flow. Having tested, install the valve to the wall, take the safe cover apart and install the plate and handle.

Installation Fig



Flow rate Curves



Test pressure: 1.6MPa (16bar)

Flow pressure:

Min 0.05MPa

Max 1.60MPa

Recommended pressure:

0.1MPa to 0.8MPa (1 to 8 bar)

Note

1. Ensure to clean the water supply pipe before installing to avoid being jammed.
2. The cold-water supply must be connected on the right and the hot-water supply on the left.
3. Check the installing dimension according to the Figure and ensure it is installed correctly.
4. Hot-water inlet must not be over 80°C.