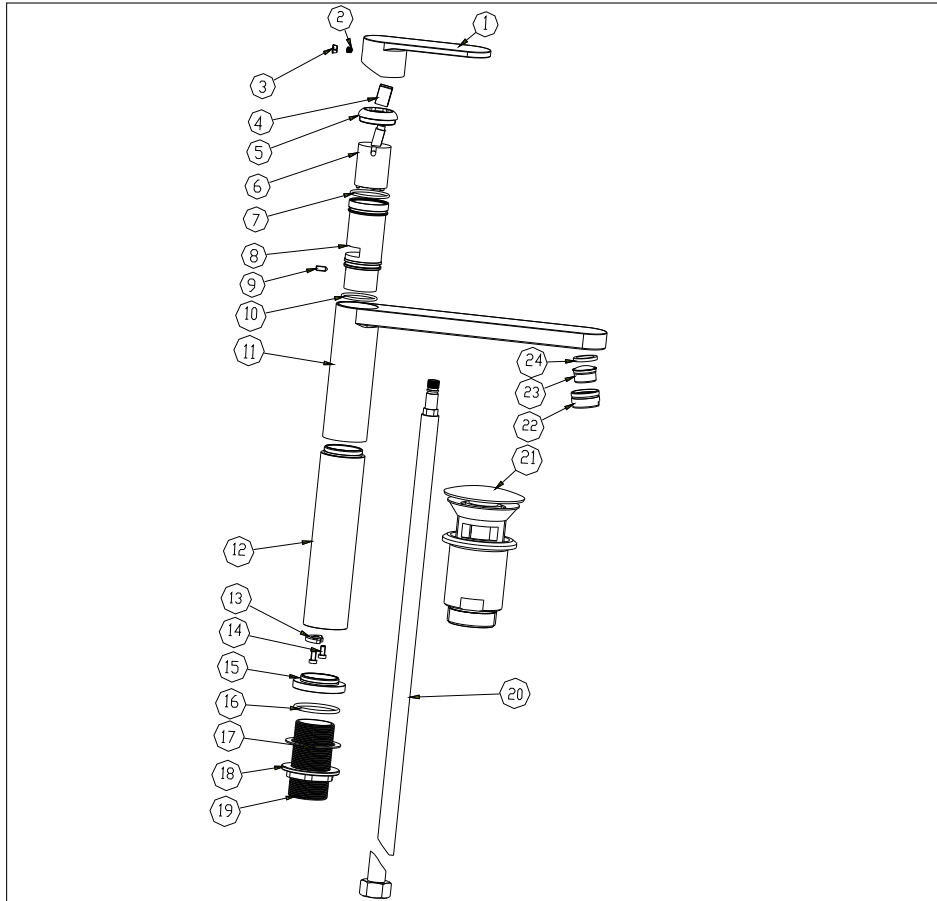


Raised basin mixer

Installation Instruction

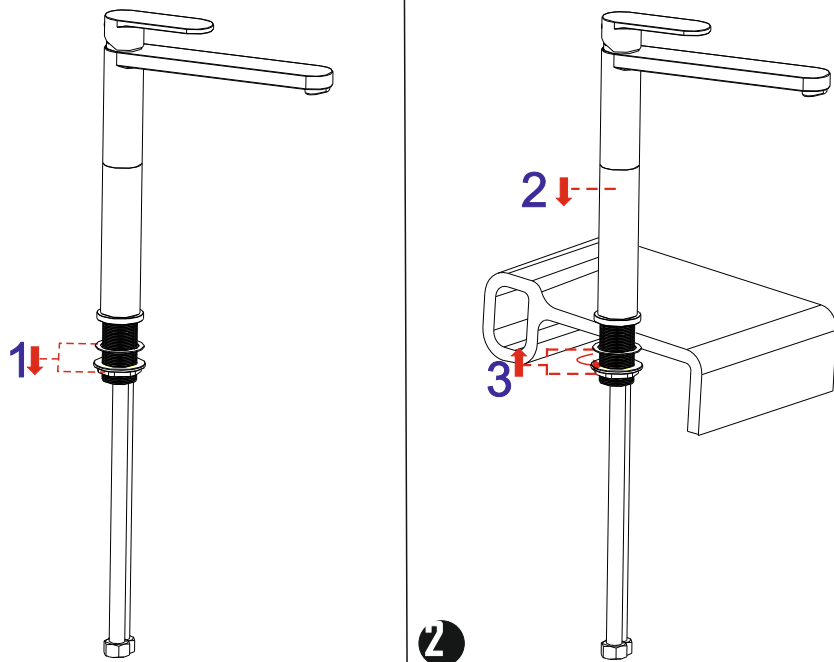
Please read this instruction carefully to avoid any difficulty during installation.



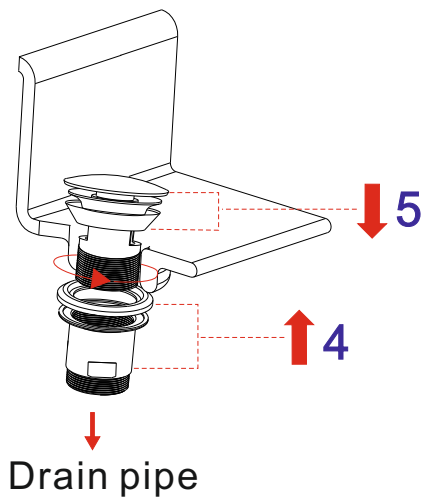
Components List

No.	Component	Material	Quantity
1	Handle	BRASS	1
2	Female allen screw	S.S304	1
3	Plug	ABS	1
4	Bushing	PA66	1
5	Cap	BRASS	1
6	Ceramic cartridge		1
7	O-ring	NBR	1
8	Bushing	BRASS	1
9	Female allen screw	S.S304	1
10	O-ring	NBR	1
11	Main body	BRASS	1
12	Longer pipe	BRASS	1
13	Fastening washer	S.S304	1
14	Fastening screw	S.S304	2
15	Seat	BRASS	1
16	O-ring	NBR	1
17	Washer	NBR	1
18	Fastening nut	BRASS	1
19	Thread pipe	BRASS	1
20	Flexible connection hose		2
21	Pop-up waste		1
22	Aerator coat	BRASS	1
23	Aerator core		1
24	Flat washer	NBR	1

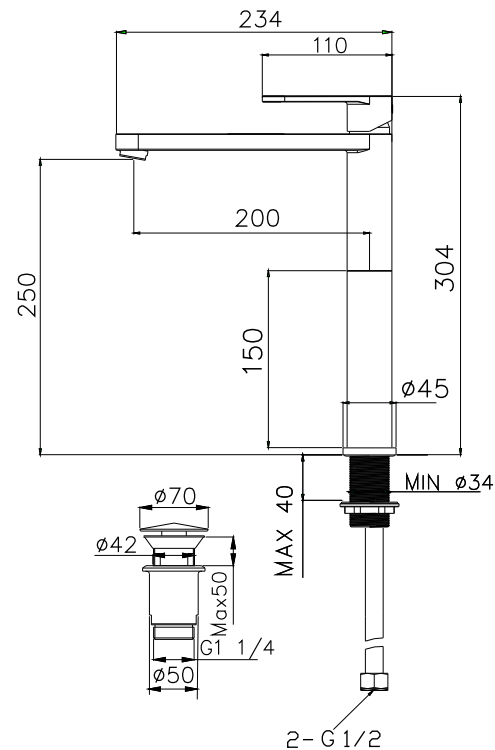
Installation Step



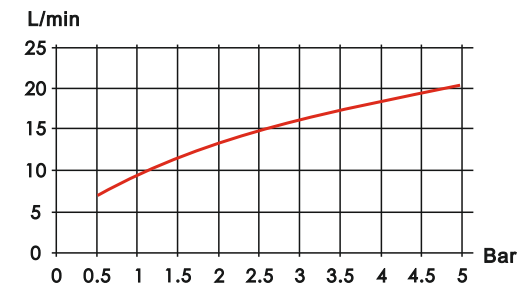
3



Installation Fig



Flow rate Curves



Test pressure: 1.6MPa (16bar)

Flow pressure:

Min 0.05MPa

Max 1.60MPa

Recommended pressure:

0.1MPa to 0.8MPa (1 to 8 bar)

Note

1. Ensure to clean the water supply pipe before installing to avoid being jammed.
2. The cold-water supply must be connected on the right and the hot-water supply on the left.
3. Check the installing dimension according to the Figure and ensure it is installed correctly.
4. Hot-water inlet must not be over 80°C.