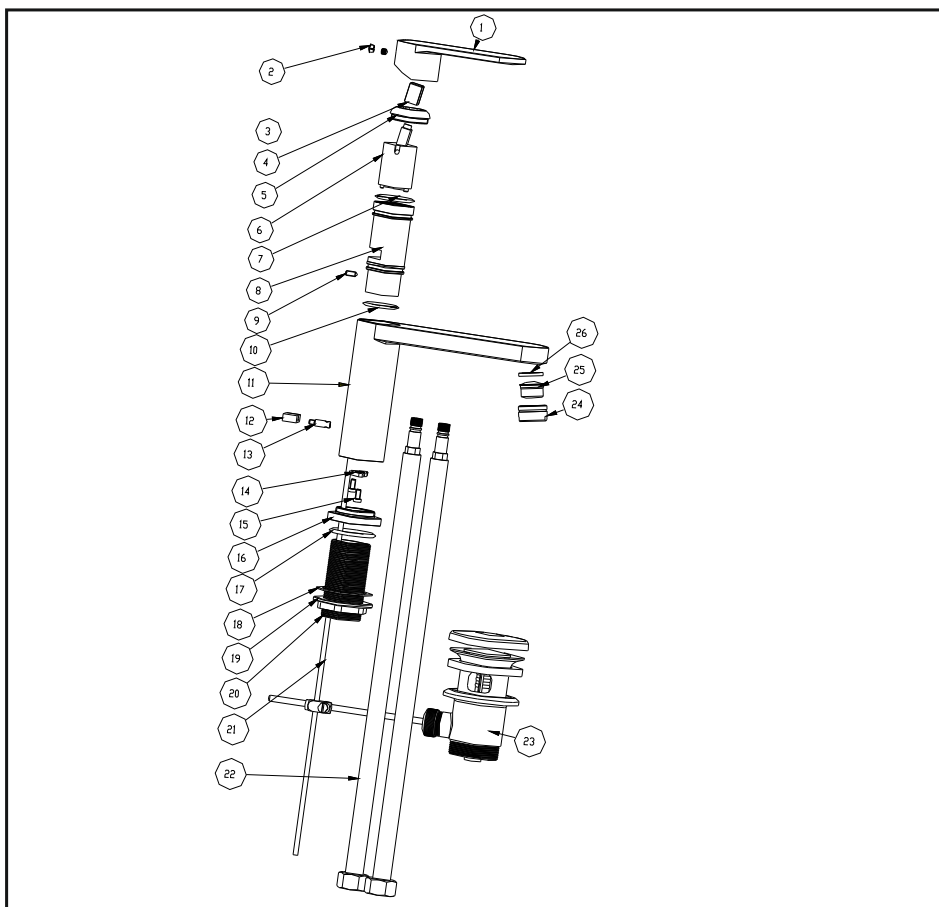


Basin mixer

Installation Instruction

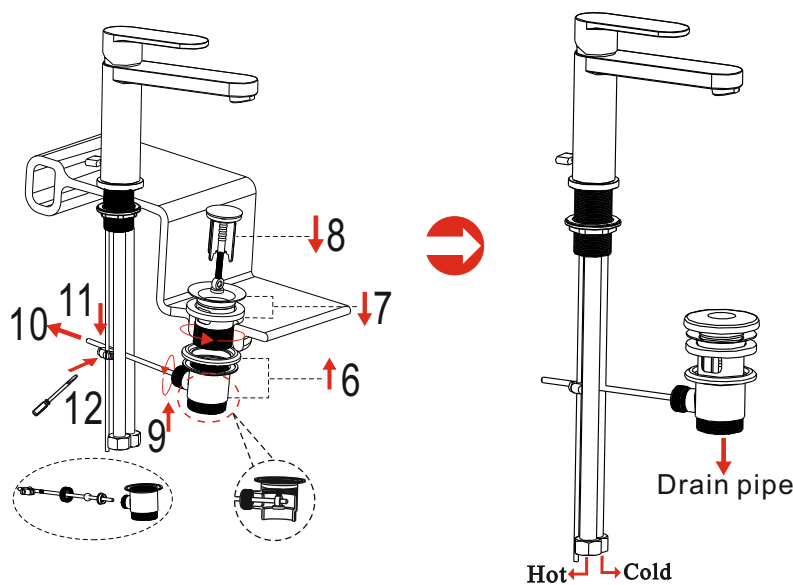
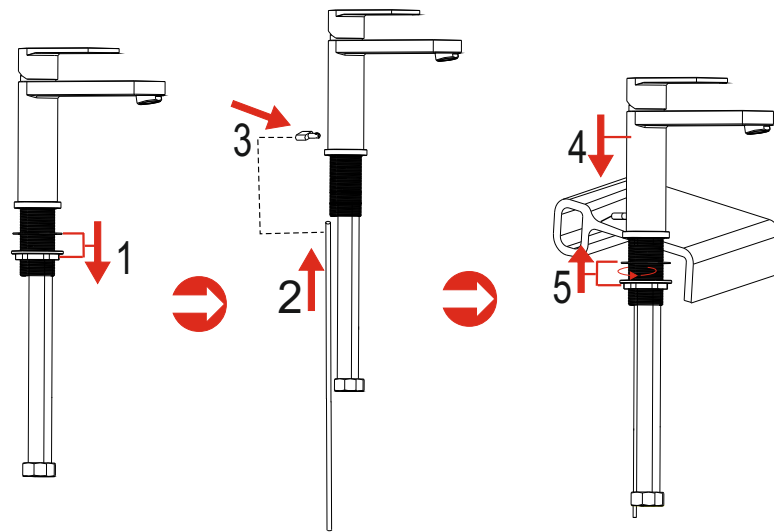
Please read this instruction carefully so as to avoid the installation difficulty.



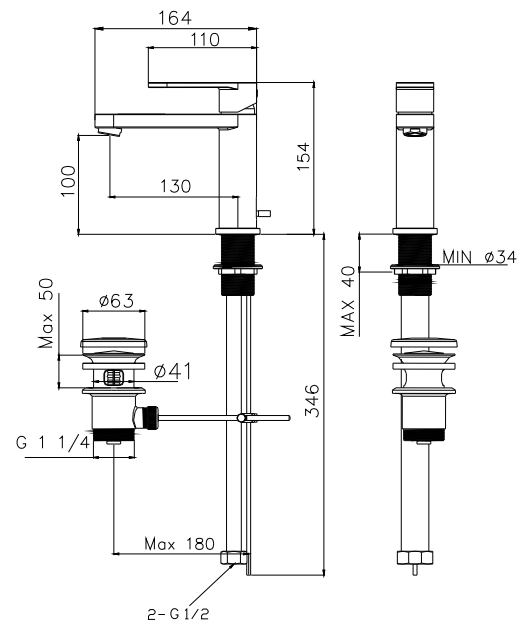
Components List

No.	Component	Material	Quantity
1	Handle	BRASS	1
2	Plug	ABS	1
3	Female allen screw	SUS304	1
4	Bushing	PA66	1
5	Cap	BRASS	1
6	Ceramic cartridge		1
7	O-ring	NBR	1
8	Bushing	BRASS	1
9	Female allen screw	SUS304	1
10	O-ring	NBR	1
11	Main body	BRASS	1
12	Pop-up knob	BRASS	1
13	Union	BRASS	1
14	Fastening washer	SUS304	1
15	Fastening screw	SUS304	2
16	Seat	BRASS	1
17	O-ring	NBR	1
18	Washer	NBR	1
19	Fastening nut	BRASS	1
20	Thread pipe	BRASS	1
21	Pop-up rod	BRASS	1
22	Flexible connection hose		2
23	Pop-up waste		1
24	Aerator coat	BRASS	1
25	Aerator core		1
26	Flat washer	NBR	1

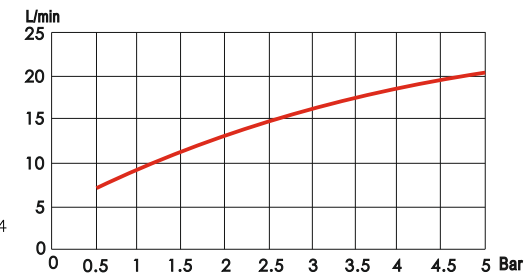
Installation Step



Installation Fig



Flow rate Curves



Test pressure: 1.6MPa (16bar)

Flow pressure:

Min 0.05MPa

Max 1.60MPa

Recommended pressure:

0.1MPa to 0.8MPa (1 to 8 bar)

Note

1. Ensure to clean the water supply pipe before installing to avoid being jammed.
2. The cold-water supply must be connected on the right and the hot-water supply on the left.
3. Check the installing dimension according to the Figure and ensure it is installed correctly.
4. Hot-water inlet must not be over 80°C.