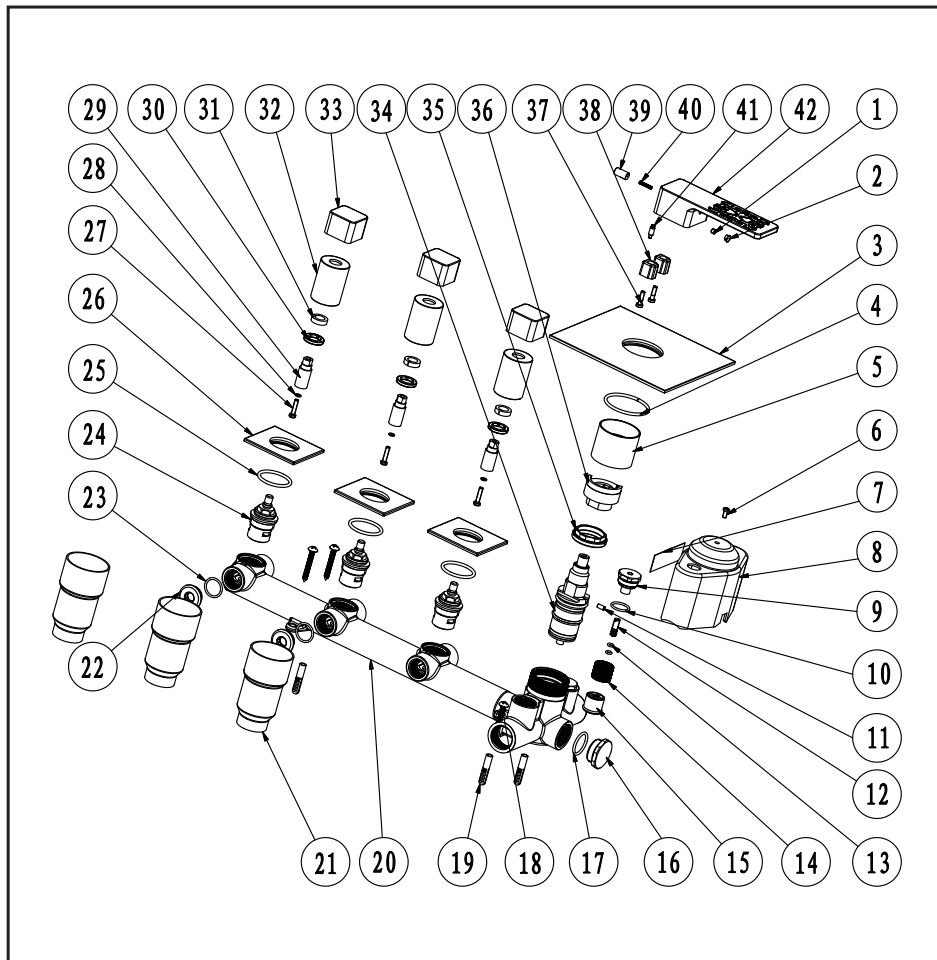


# CONCEALED THERMOSTATIC MODULE WITH 3 VOLUME CONTROLS

## Installation Instruction

Please read this instruction carefully to avoid any difficulty during installation.



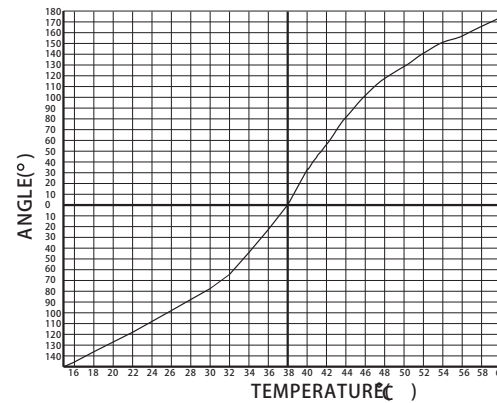
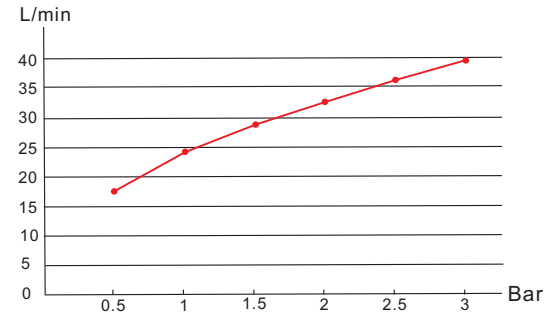
## Components List

No.	Component	Quantity
1	Female allen screw	1
2	Plug	1
3	Plate	1
4	O-ring	1
5	Cover	1
6	Cross-head screw	1
7	Index	1
8	Safe cover for diverter	1
9	Screw	2
10	O-ring	2
11	Setting pin	1
12	Screw	2
13	O-ring	4
14	Filter	2
15	Check valve	2
16	Stopper	1
17	O-ring	1
18	Cross-head screw	4
19	Plastic sleeve	4
20	Main body	1
21	Safe cover for diverter	3
22	Stopper	2
23	O-ring	2
24	Ceramic head part	3
25	Sealing strip	3
26	Plate	3
27	Cross-head screw	3
28	Spring shim	3
29	Long pipe	3

## Components List

No.	Component	Quantity
30	Fastening screw	3
31	Ring	3
32	Decorating	3
33	Handle	1
34	Spindle	1
35	Fastening nut	1
36	Setting cover	1
37	Cross-head screw	2
38	Block	2
39	Plug	1
40	Spring	1
41	Setting rod	1
42	Handle	1

## Flow rate Curves



Test pressure: 1.6MPa (16bar)

Flow pressure:

Min 0.05MPa

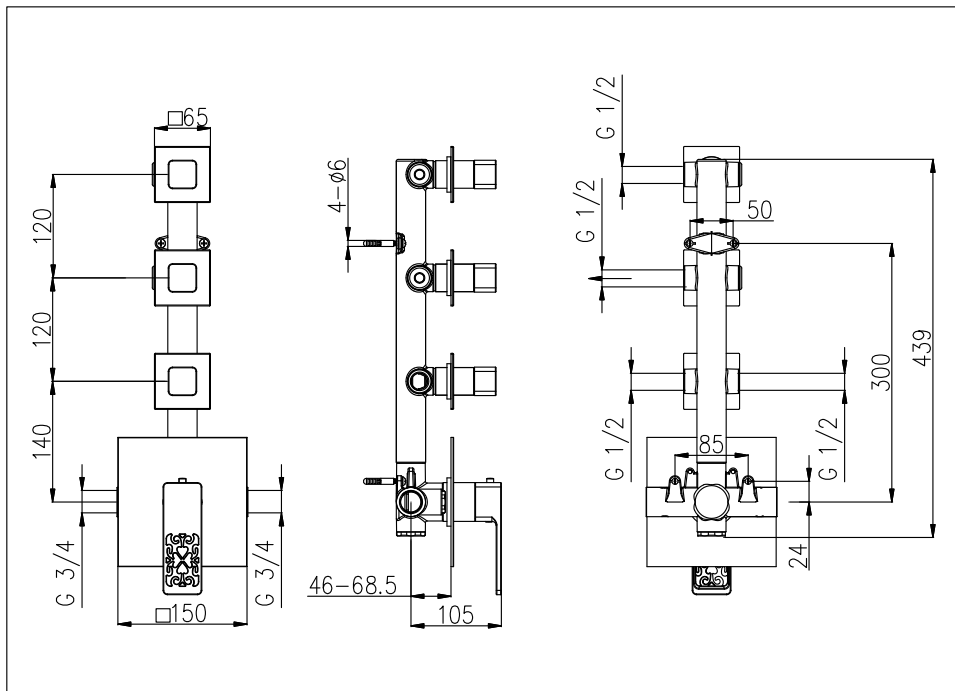
Max 1.60MPa

Recommended pressure:  
0.1MPa to 0.8MPa (1 to 8 bar)

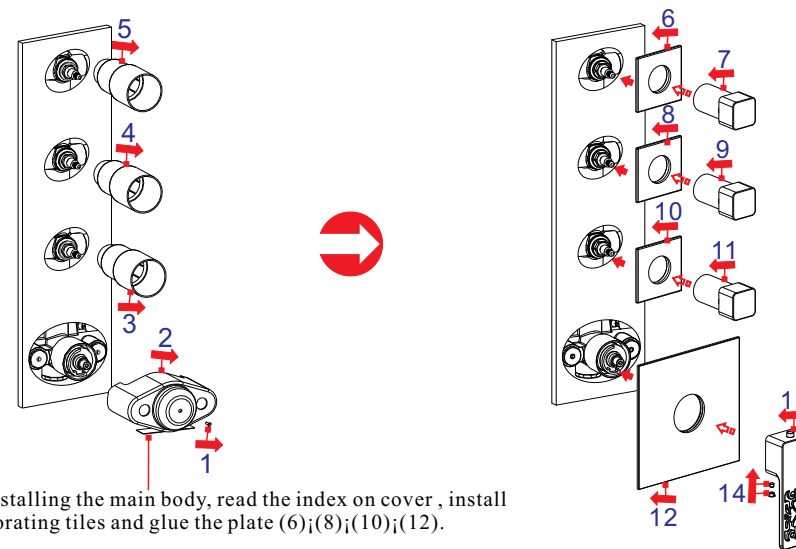
## Note

1. Ensure to clean the water supply pipe before installing to avoid being jammed.
2. The cold-water supply must be connected on the right and the hot-water supply on the left.
3. Check the installing dimension according to the Figure and ensure it is installed correctly.
4. Hot-water inlet must not be over 80°C.

## Installation Fig



2



After installing the main body, read the index on cover, install the decorating tiles and glue the plate (6);(8);(10);(12).

- \* Read the Installation Fig and confirm the installing position.
- \*\* Attention: the inner radii of the G1/2 connection pipe is not less than  $\phi 13$ mm.
- \*\*\* Make sure that index on the escutcheon meets the connectors of outlets.

## Test:

Open the supply pipes, close the ceramic cartridge and check the connections for leakage; open the ceramic cartridge and check the smooth water flow. Decorate the wall after checking and remove the safe cover. Install the escutcheon and handle.

## Installation Step

1

