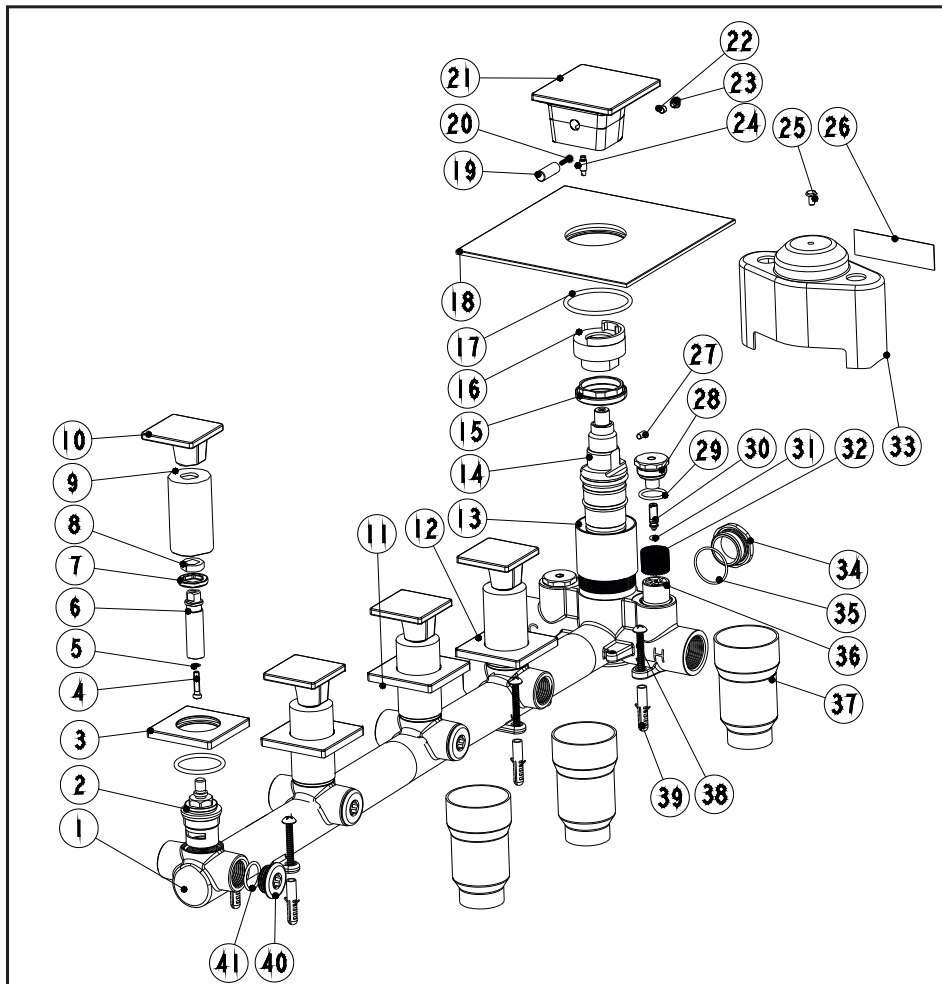


# Concealed thermostatic module with 4 volume controls

## Installation Instruction

Please read this instruction carefully to avoid any difficulty during installation.



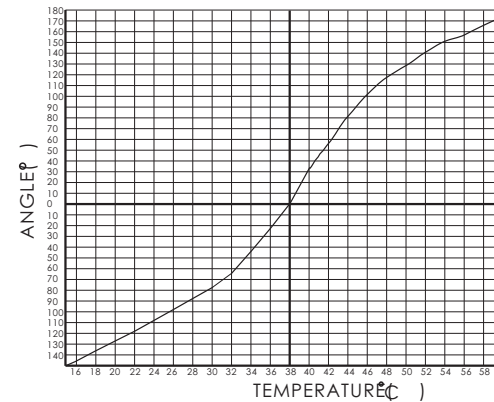
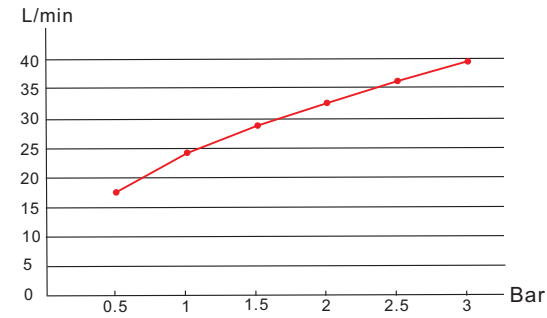
## Components List

No.	Component	Quantity
1	Main body	1
2	Ceramic head part	4
3	Plate	2
4	Cross-head screw	4
5	Spring shim	4
6	Longer rod	5
7	Fastening screw	4
8	Plastic ring	5
9	Decorating pipe	4
10	Handle for diverting	4
11	Plate	1
12	Plate	1
13	Cover	1
14	Spindle	1
15	Fastening nut	1
16	Cover	1
17	Sealing strip	1
18	Plate	1
19	Button	1
20	Spring	1
21	Handle	1
22	Fastening screw	1
23	Plug	1
24	Setting rod	1
25	Cross-head screw	1
26	Index	1
27	Setting pin	1
28	Screw	2
29	O-ring	2

## Components List

No.	Component	Quantity
30	Adjusting screw	2
31	O-ring	2
32	Filter	2
33	Safe cover	1
34	Stopper	1
35	O-ring	1
36	Check valve	2
37	Safe cover	3
38	Cross-head screw	6
39	Plastic sleeve	6
40	Stopper	3
41	O-ring	3

## Flow rate Curves



Test pressure: 1.6MPa (16bar)

Flow pressure:

Min 0.05MPa

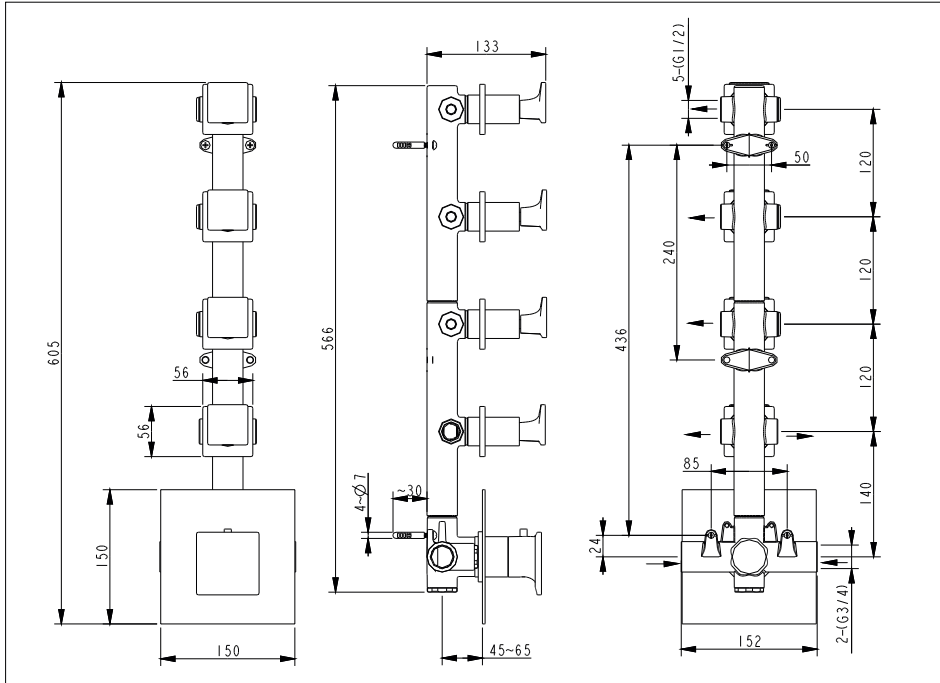
Max 1.60MPa

Recommended pressure:  
0.1MPa to 0.8MPa (1 to 8 bar)

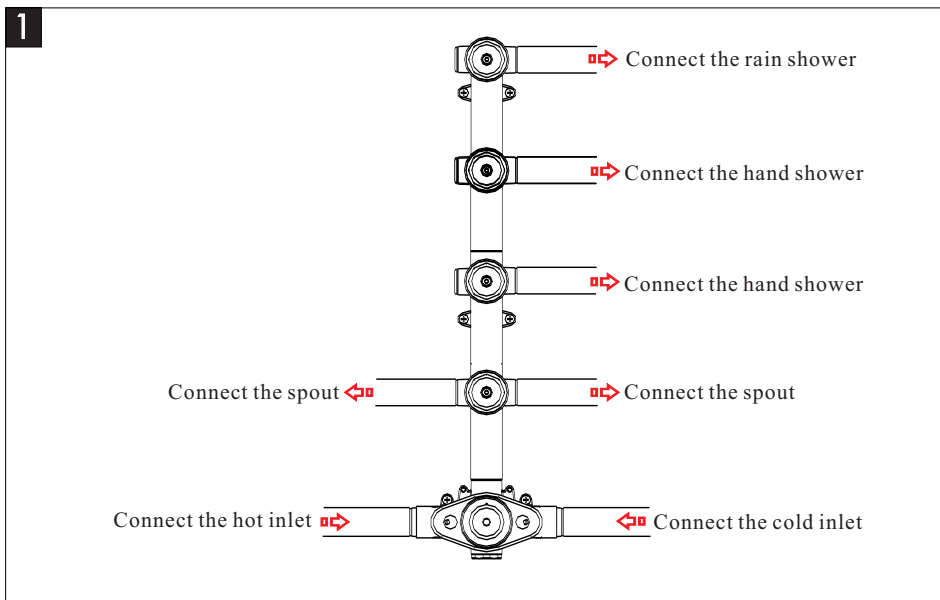
## Note

1. Ensure to clean the water supply pipe before installing to avoid being jammed.
2. The cold-water supply must be connected on the right and the hot-water supply on the left.
3. Check the installing dimension according to the Figure and ensure it is installed correctly.
4. Hot-water inlet must not be over 80°C.

## Installation Step

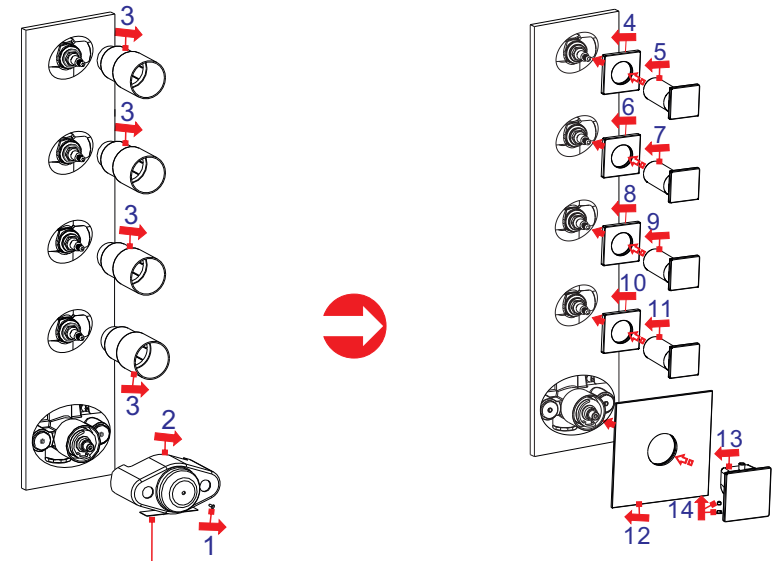


## Installation Step



05 of 06

2



After installing the main body, read the index on cover, install the decorating tiles and glue the plate (4) (6) (8) (10) (12).

- ✱ Read the Installation Fig and confirm the installing position.
- ✱✱ Attention: the inner radii of the G1/2 connection pipe is not less than  $\phi 13\text{mm}$ .
- ✱✱✱ Make sure that index on the escutcheon meets the connectors of outlets.

### Test:

Open the supply pipes, close the ceramic cartridge and check the connections for leakage; open the ceramic cartridge and check the smooth water flow. Decorate the wall after checking and remove the safe cover. Install the escutcheon and handle.

04 of 06

PZMF145652  
2013.09.27