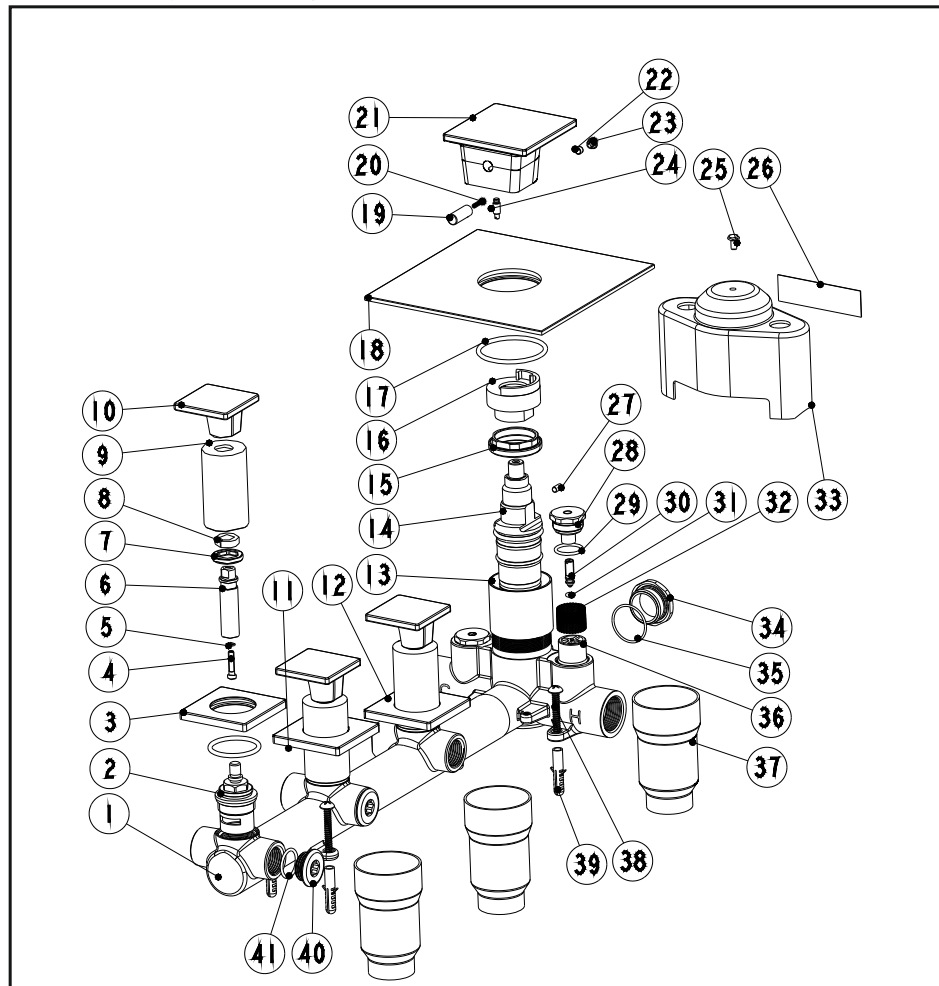


CONCEALED THERMOSTATIC MODULE WITH 3 VOLUME CONTROLS

Installation Instruction

Please read this instruction carefully to avoid any difficulty during installation.



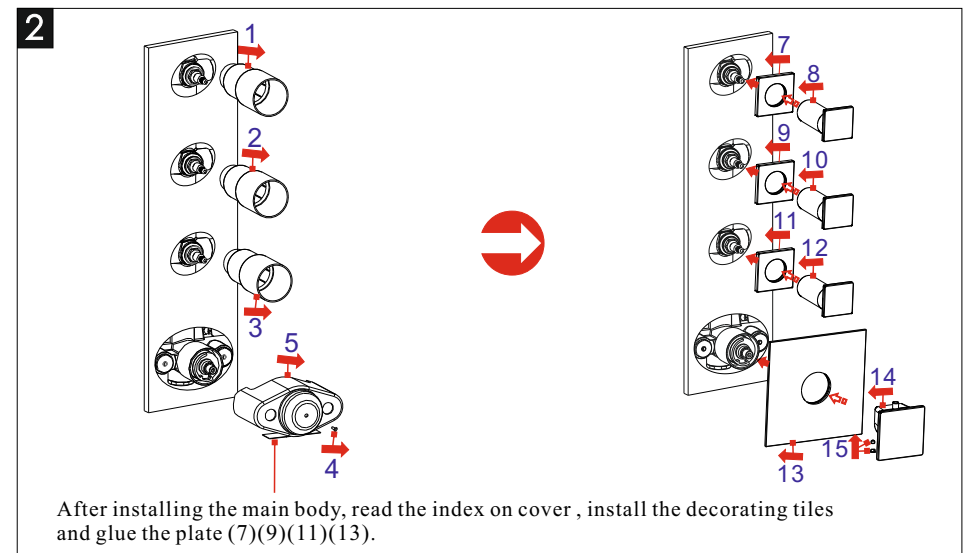
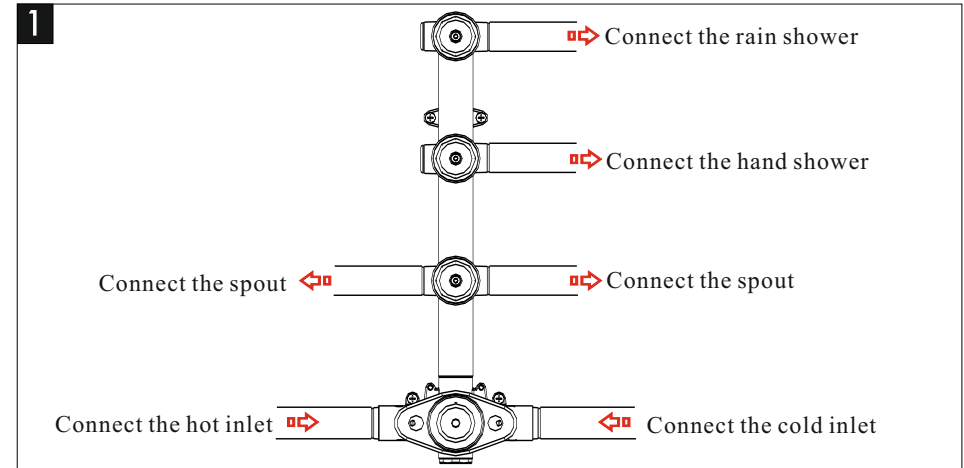
Components List

| No. | Component | Quantity |
|-----|----------------------|----------|
| 1 | Main body | 1 |
| 2 | Ceramic head part | 3 |
| 3 | Plate | 1 |
| 4 | Cross-head screw | 3 |
| 5 | Spring shim | 3 |
| 6 | Longer rod | 4 |
| 7 | Fastening screw | 3 |
| 8 | Plastic ring | 4 |
| 9 | Decorating pipe | 3 |
| 10 | Handle for diverting | 3 |
| 11 | Plate | 1 |
| 12 | Plate | 1 |
| 13 | Cover | 1 |
| 14 | Spindle | 1 |
| 15 | Fastening nut | 1 |
| 16 | Cover | 1 |
| 17 | Sealing strip | 1 |
| 18 | Plate | 1 |
| 19 | Button | 1 |
| 20 | Spring | 1 |
| 21 | Handle | 1 |
| 22 | Fastening screw | 1 |
| 23 | Plug | 1 |
| 24 | Setting rod | 1 |
| 25 | Cross-head screw | 1 |
| 26 | Index | 1 |
| 27 | Setting pin | 1 |
| 28 | Screw | 2 |
| 29 | O-ring | 2 |

Components List

| No. | Component | Quantity |
|-----|------------------|----------|
| 30 | Adjusting screw | 2 |
| 31 | O-ring | 2 |
| 32 | Filter | 2 |
| 33 | Safe cover | 1 |
| 34 | Stopper | 1 |
| 35 | O-ring | 1 |
| 36 | Check valve | 2 |
| 37 | Safe cover | 3 |
| 38 | Cross-head screw | 4 |
| 39 | Plastic sleeve | 4 |
| 40 | Stopper | 2 |
| 41 | O-ring | 2 |

Installation Step

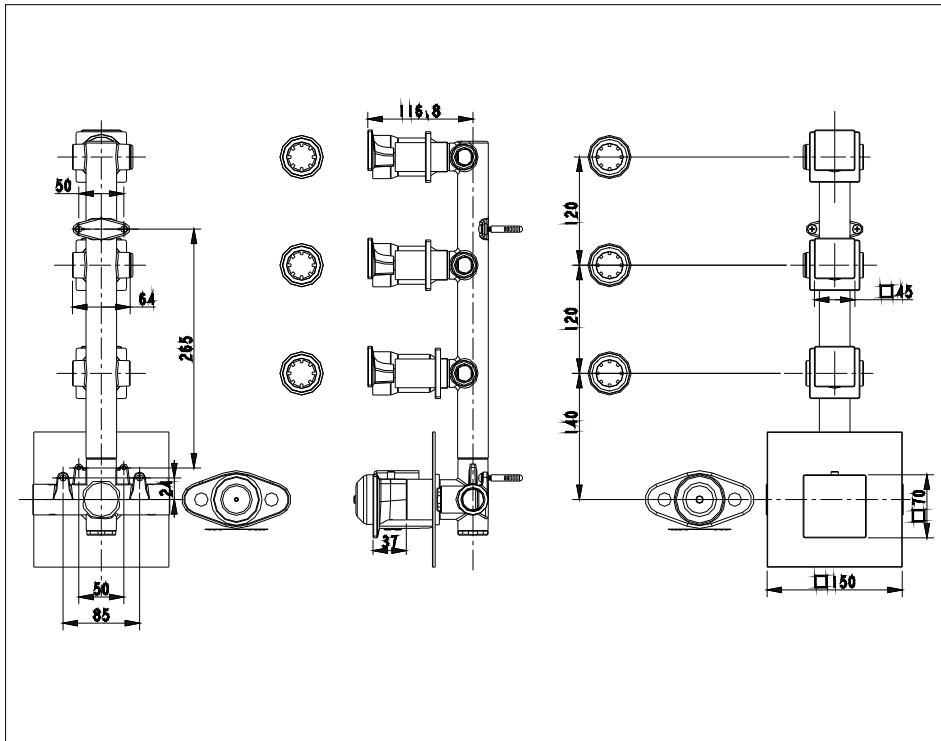


- ✱ Read the Installation Fig and confirm the installing position.
- ✱✱ Attention: the inner radii of the G1/2 connection pipe is not less than $\varnothing 13\text{mm}$.
- ✱✱✱ Make sure that index on the escutcheon meets the connectors of outlets.

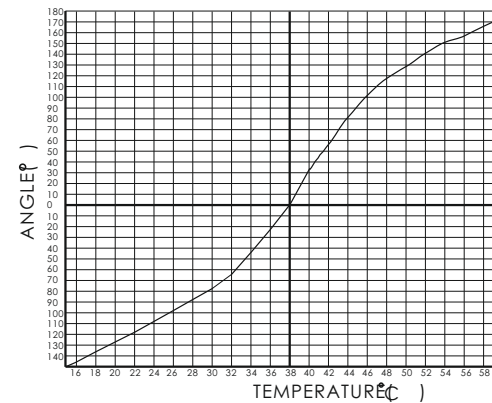
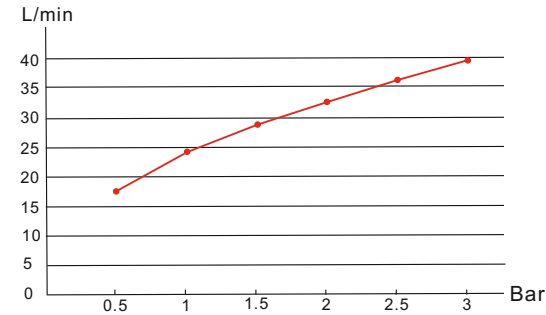
Test:

Open the supply pipes, close the ceramic cartridge and check the connections for leakage; open the ceramic cartridge and check the smooth water flow. Decorate the wall after checking and remove the safe cover. Install the escutcheon and handle.

Installation Step



Flow rate Curves



Test pressure: 1.6MPa (16bar)

Flow pressure:

Min 0.05MPa

Max 1.60MPa

Recommended pressure:
0.1MPa to 0.8MPa (1 to 8 bar)

Note

1. Ensure to clean the water supply pipe before installing to avoid being jammed.
2. The cold-water supply must be connected on the right and the hot-water supply on the left.
3. Check the installing dimension according to the Figure and ensure it is installed correctly.
4. Hot-water inlet must not be over 80°C.