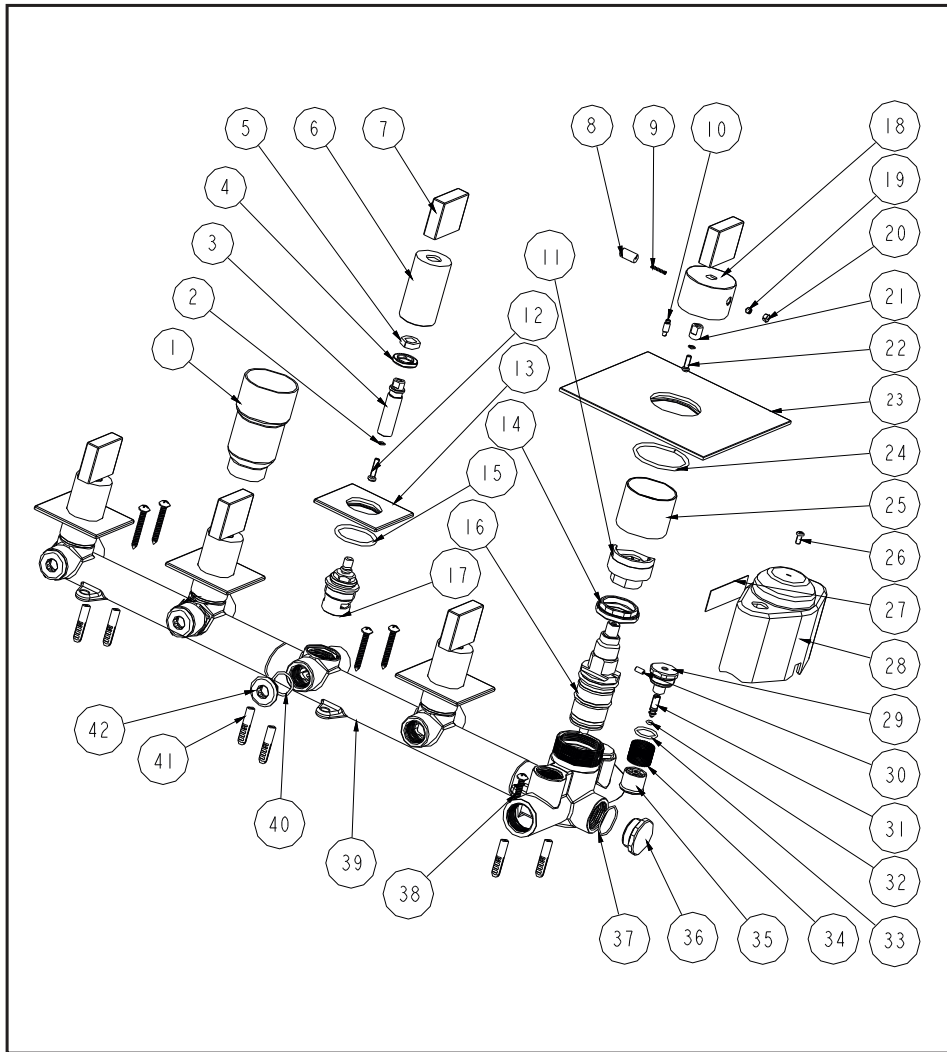


Concealed thermostatic module with 4 volume controls

Installation Instruction

Please read this instruction carefully to avoid any difficulty during installation.



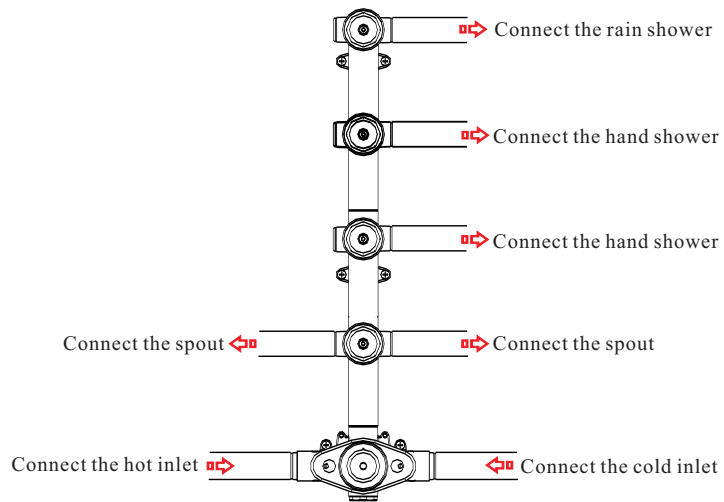
Components List

No .	Component	Quantity
1	Cover	4
2	Spring shim	5
3	Longer rod	4
4	Fastening screw	4
5	Plastic ring	4
6	Decorating pipe	4
7	Safe cover	5
8	Decorating knob	1
9	Spring	1
10	Setting pin	1
11	Fastening sleeve	1
12	Cross-head screw	4
13	Escutcheon	4
14	Fastening nut	1
15	Sealing strip	4
16	Spindle	1
17	Ceramic head part	4
18	Handle	1
19	Female allen screw	1
20	Plug	1
21	Longer rod	1
22	Cross-head screw	1
23	Plate	1
24	Sealing strip	1
25	Cover	1
26	Cross-head screw	1
27	Index	1
28	Safe cover for body	1
29	Fastening screw	2
30	Setting pin	1
31	Adjusting screw	2
32	Screw	2
33	O-ring	2
34	Filter	2
35	Check valve	2
36	Stopper	1
37		
38		
39		
40		
41		
42		

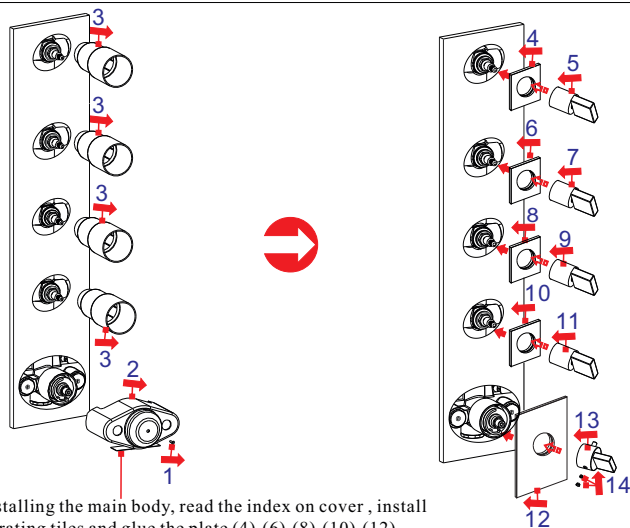
No .	Component	Quantity
37	O-ring	1
38	Cross-head screw	6
39	Main body	1
40	O-ring	3
41	Plastic sleeve	6
42	Stopper	3

Installation Step

1

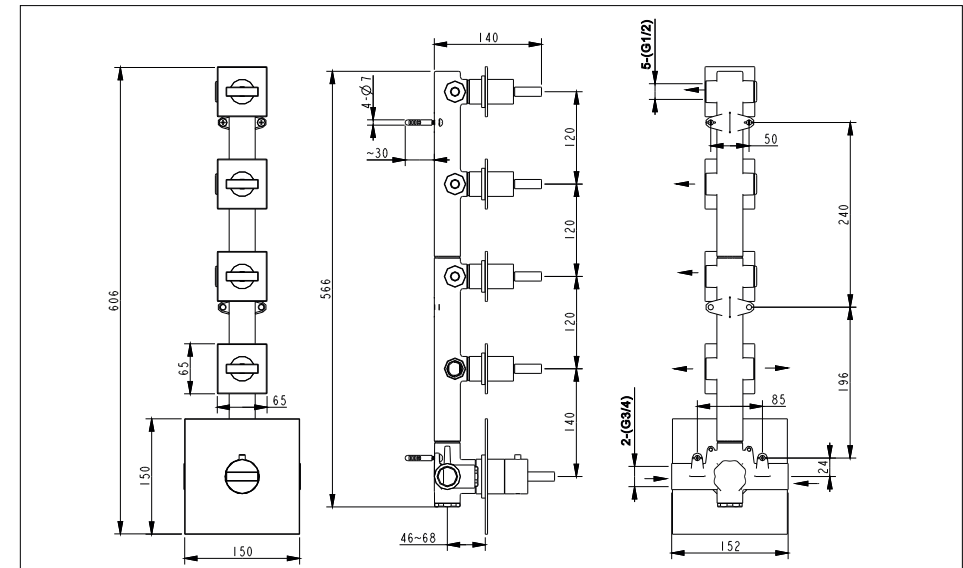


2

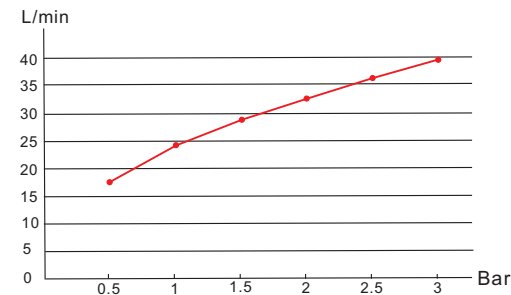


After installing the main body, read the index on cover, install the decorating tiles and glue the plate (4) (6) (8) (10) (12).

Installation Fig



Flow rate Curves



Test pressure: 1.6MPa (16bar)

Flow pressure:

Min 0.05MPa

Max 1.60MPa

Recommended pressure:

0.1MPa to 0.8MPa (1 to 8 bar)

Note

1. Open the supply pipes, close the ceramic cartridge and check the connections for leakage; open the ceramic cartridge and check the smooth water flow. Decorate the wall after checking and remove the safe cover. Install the escutcheon and handle.
2. Ensure to clean the water supply pipe before installing to avoid being jammed.
3. The cold-water supply must be connected on the right and the hot-water supply on the left.
4. Check the installing dimension according to the Figure and ensure it is installed correctly.
5. Hot-water inlet must not be over 80°C.