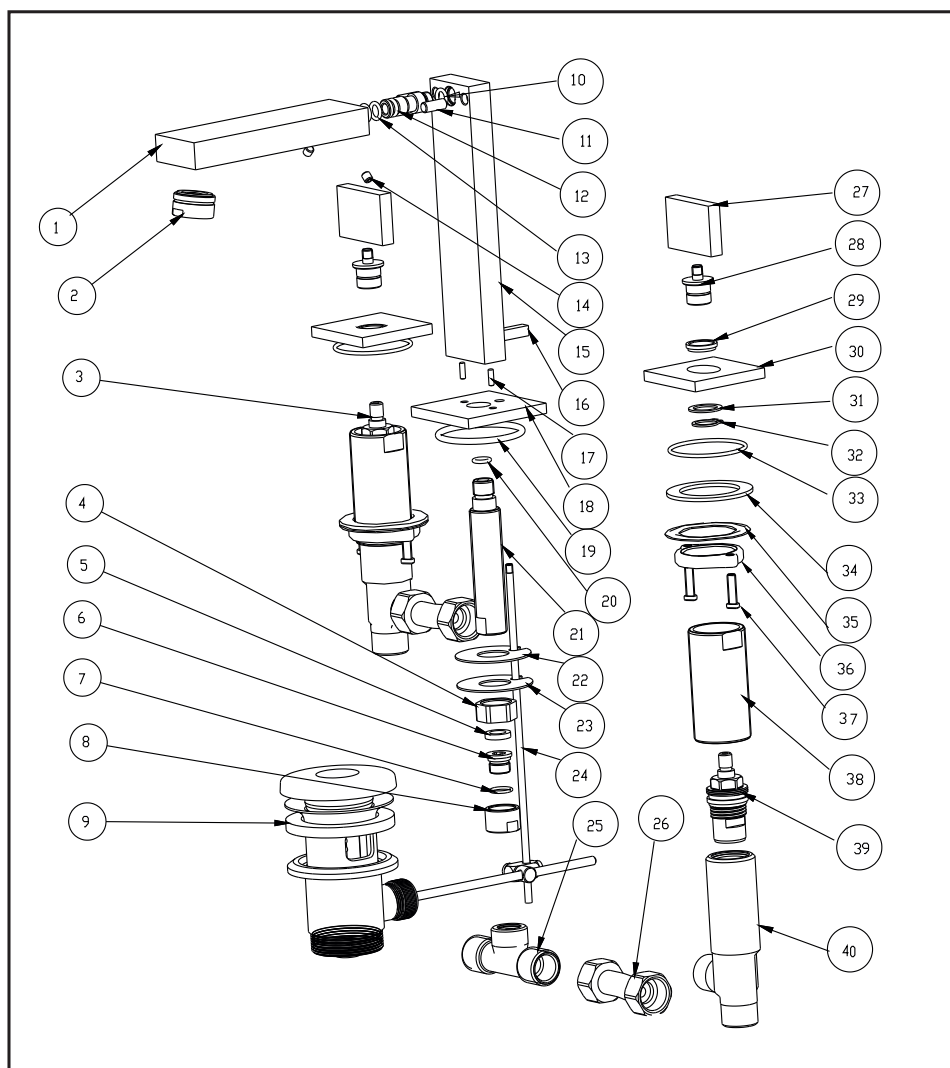


# 3-hole basin mixer

## Installation Instruction

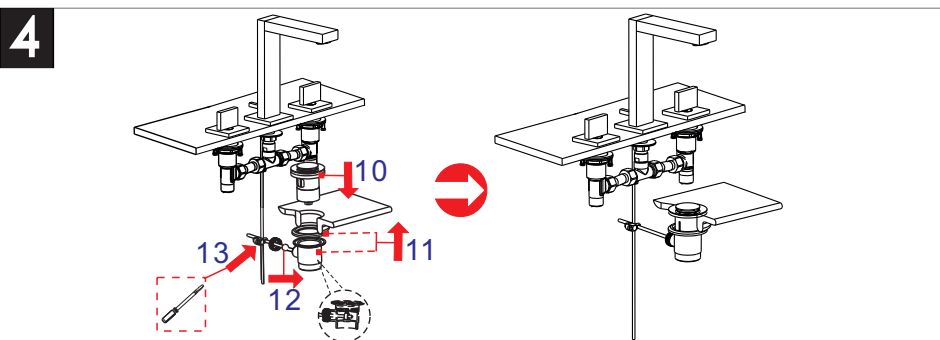
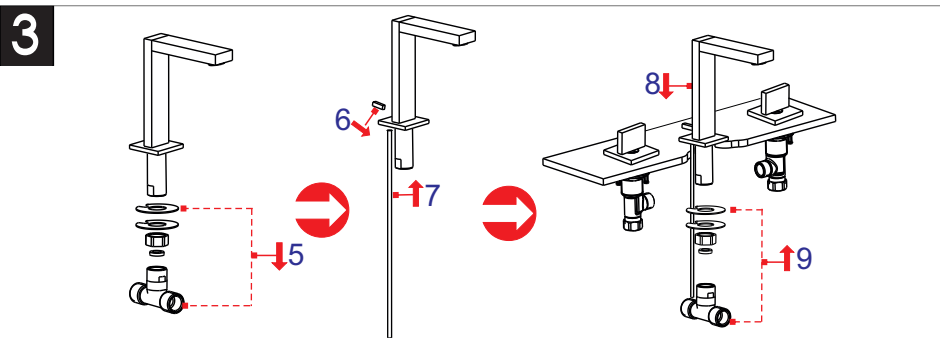
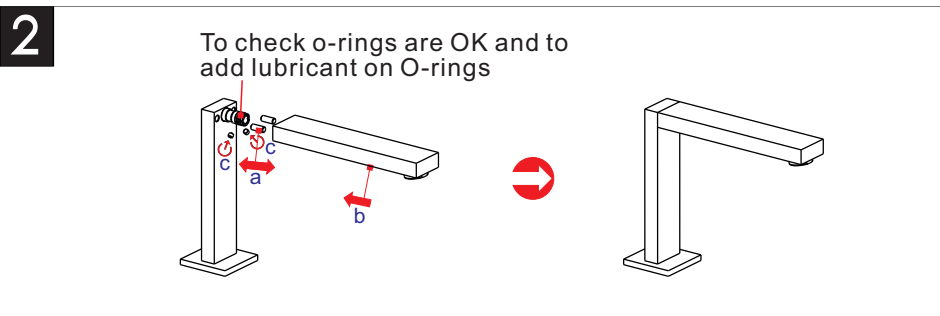
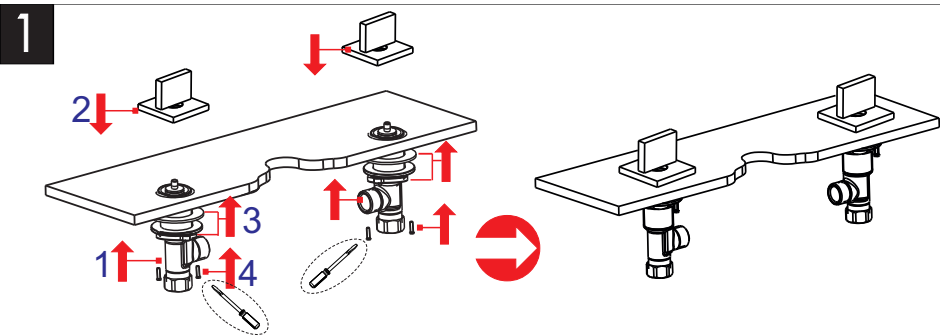
Please read this instruction carefully to avoid any difficulty during installation.



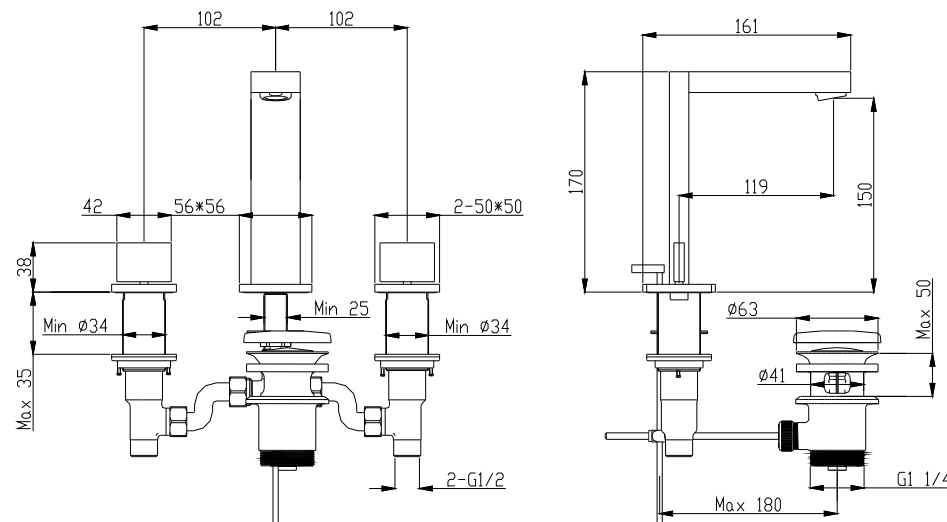
## Components List

| No. | Component          | Quantity |
|-----|--------------------|----------|
| 1   | Spout              | 1        |
| 2   | Aerator            | 1        |
| 3   | Ceramic head part  | 1        |
| 4   | Fastening nut      | 1        |
| 5   | Washer             | 1        |
| 6   | Union              | 1        |
| 7   | O-ring             | 1        |
| 8   | Nut                | 1        |
| 9   | Pop-up waste set   | 1        |
| 10  | O-ring             | 1        |
| 11  | Fixing pin         | 2        |
| 12  | Union              | 1        |
| 13  | O-ring             | 2        |
| 14  | Female allen screw | 2        |
| 15  | Spout              | 1        |
| 16  | Pop-up knob        | 1        |
| 17  | Fixing pin         | 2        |
| 18  | Seat               | 1        |
| 19  | O-ring             | 1        |
| 20  | O-ring             | 1        |
| 21  | Inlet pipe         | 1        |
| 22  | Flat washer        | 1        |
| 23  | Flat washer        | 1        |
| 24  | Pop-up rod         | 1        |
| 25  | Tee                | 1        |
| 26  | Hose               | 2        |
| 27  | Handle             | 2        |
| 28  | Union              | 2        |
| 29  | Washer             | 2        |
| 30  | Seat               | 2        |
| 31  | Washer             | 2        |
| 32  | Spring shim        | 2        |
| 33  | O-ring             | 2        |
| 34  | Washer             | 2        |
| 35  | Washer             | 2        |
| 36  | Fastening nut      | 2        |
| 37  | Cross-head screw   | 4        |
| 38  | Cover              | 2        |
| 39  | Ceramic head part  | 1        |
| 40  | Shank              | 2        |

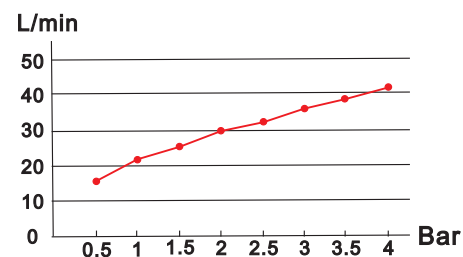
## Installation Step



## Installation Fig



## Flow rate Curves



Test pressure: 1.6MPa (16bar)

Flow pressure:

Min 0.05MPa

Max 1.60MPa

Recommended pressure:

0.1MPa to 0.8MPa (1 to 8 bar)

## Note

1. Ensure to clean the water supply pipe before installing to avoid being jammed.
2. The cold-water supply must be connected on the right and the hot-water supply on the left.
3. Check the installing dimension according to the Figure and ensure it is installed correctly.
4. Hot-water inlet must not be over 80°C.