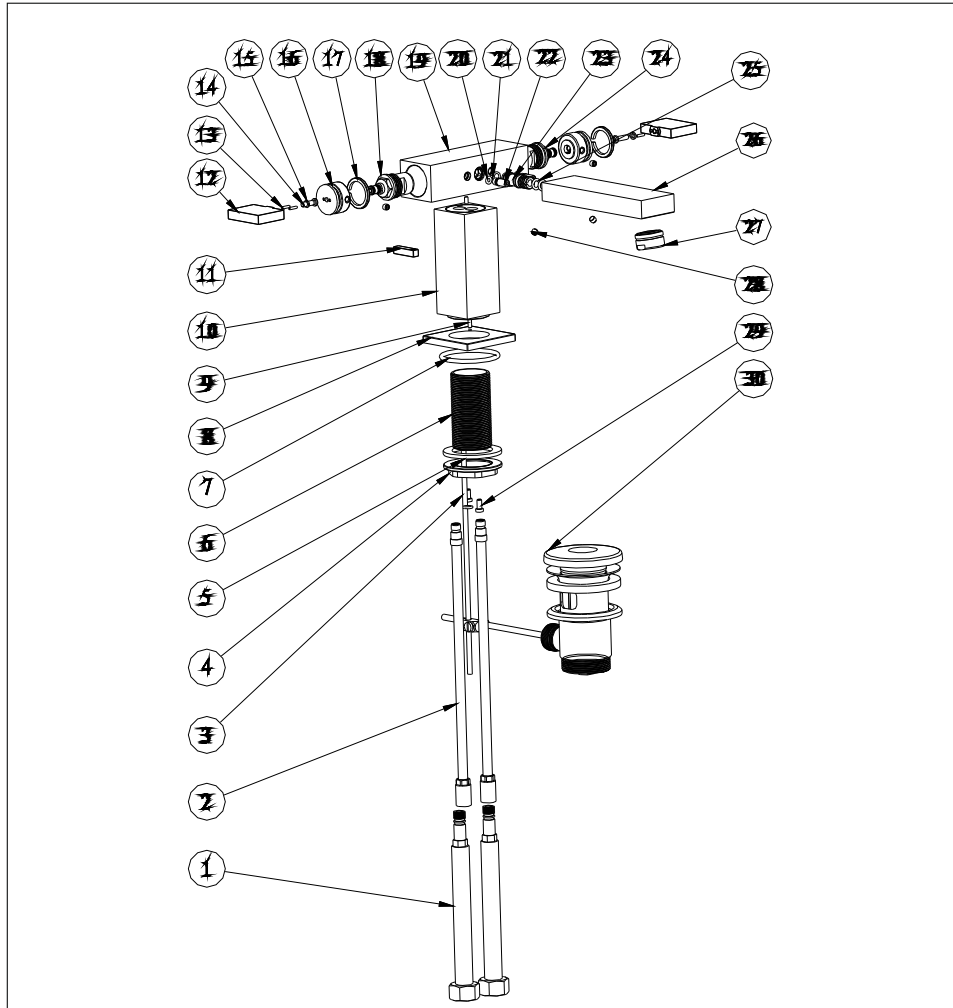


Basin mixer

Installation Instruction

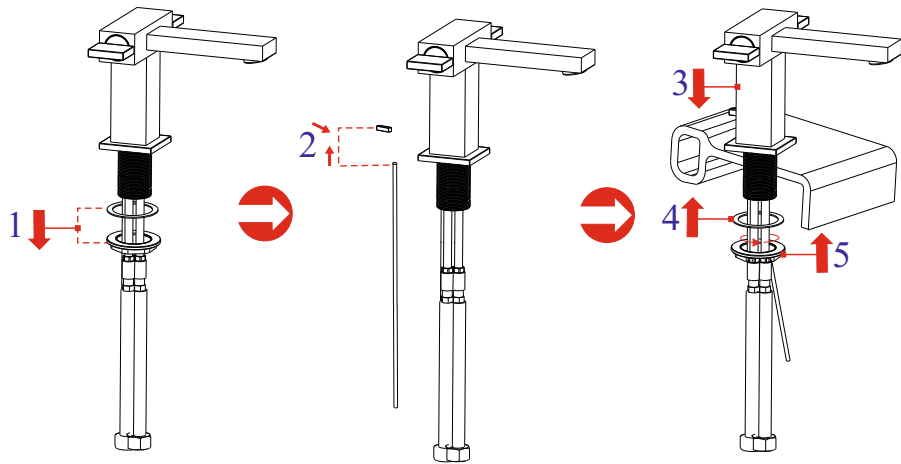
Please read this instruction carefully to avoid any difficulty during installation.



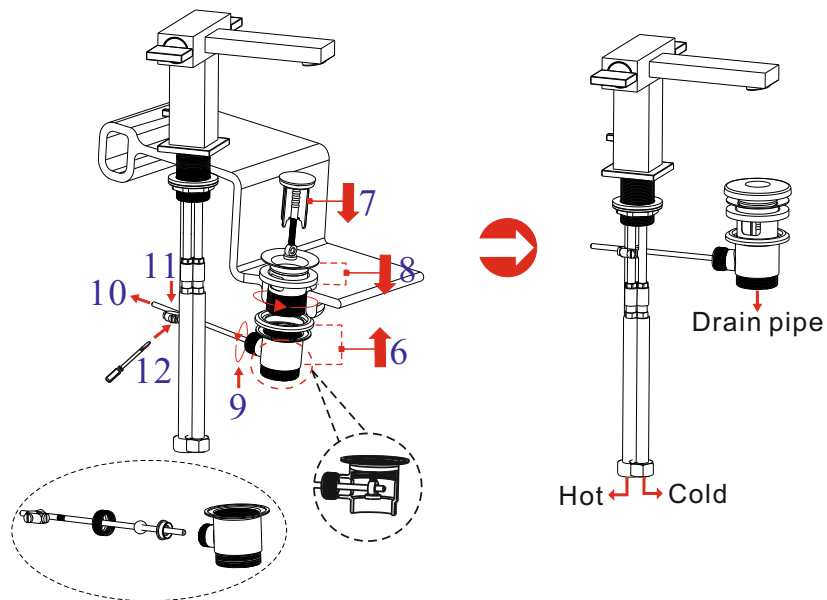
Components List

No.	Component	Quantity
1	Flexible connection hose	2
2	Inlet	2
3	Pop-up rod	1
4	Fastening nut	1
5	Washer	1
6	Pipe	1
7	O-ring	1
8	Seat	1
9	Fixing pin	2
10	Connecting pipe	1
11	Pop-up knob	1
12	Handle	2
13	Setting pin	4
14	Cross-head screw	2
15	Spring shim	2
16	Handle seat	2
17	Washer	2
18	Ceramic head part	1
19	Main body	1
20	O-ring	2
21	O-ring	3
22	Fastening screw	2
23	Fastening screw	1
24	Ceramic head part	1
25	O-ring	2
26	Spout	1
27	Aerator	1
28	Fastening screw	4
29	Fixing screw	2
30	Pop-up waste	1

Installation Step

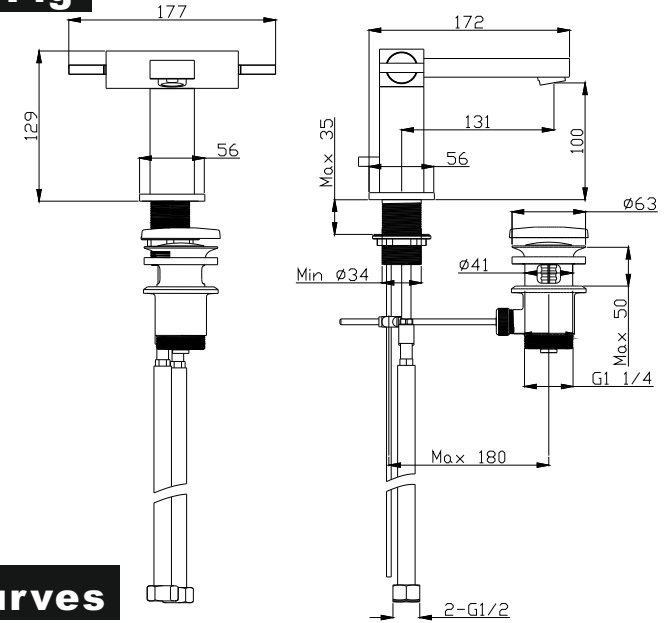


1

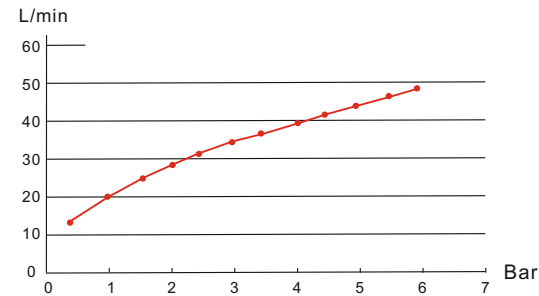


2

Installation Fig



Flow rate Curves



Test pressure: 1.6MPa (16bar)

Flow pressure:

Min 0.05MPa

Max 1.60MPa

Recommended pressure:

0.1MPa to 0.8MPa (1 to 8 bar)

Note

1. Ensure to clean the water supply pipe before installing to avoid being jammed.
2. The cold-water supply must be connected on the right and the hot-water supply on the left.
3. Check the installing dimension according to the Figure and ensure it is installed correctly.
4. Hot-water inlet must not be over 80°C.