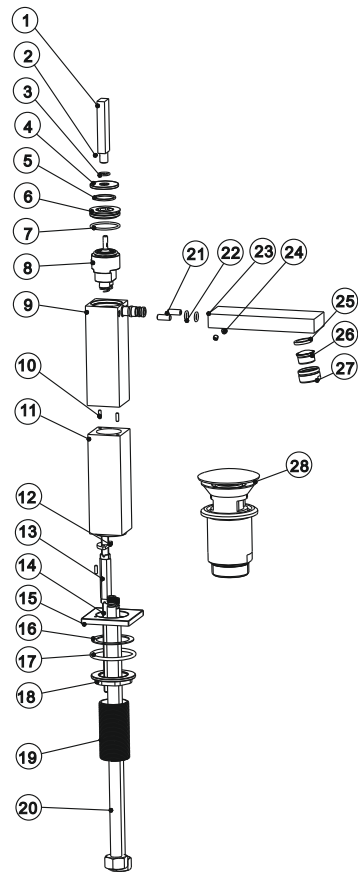


# Raised basin mixer

## Installation Instruction

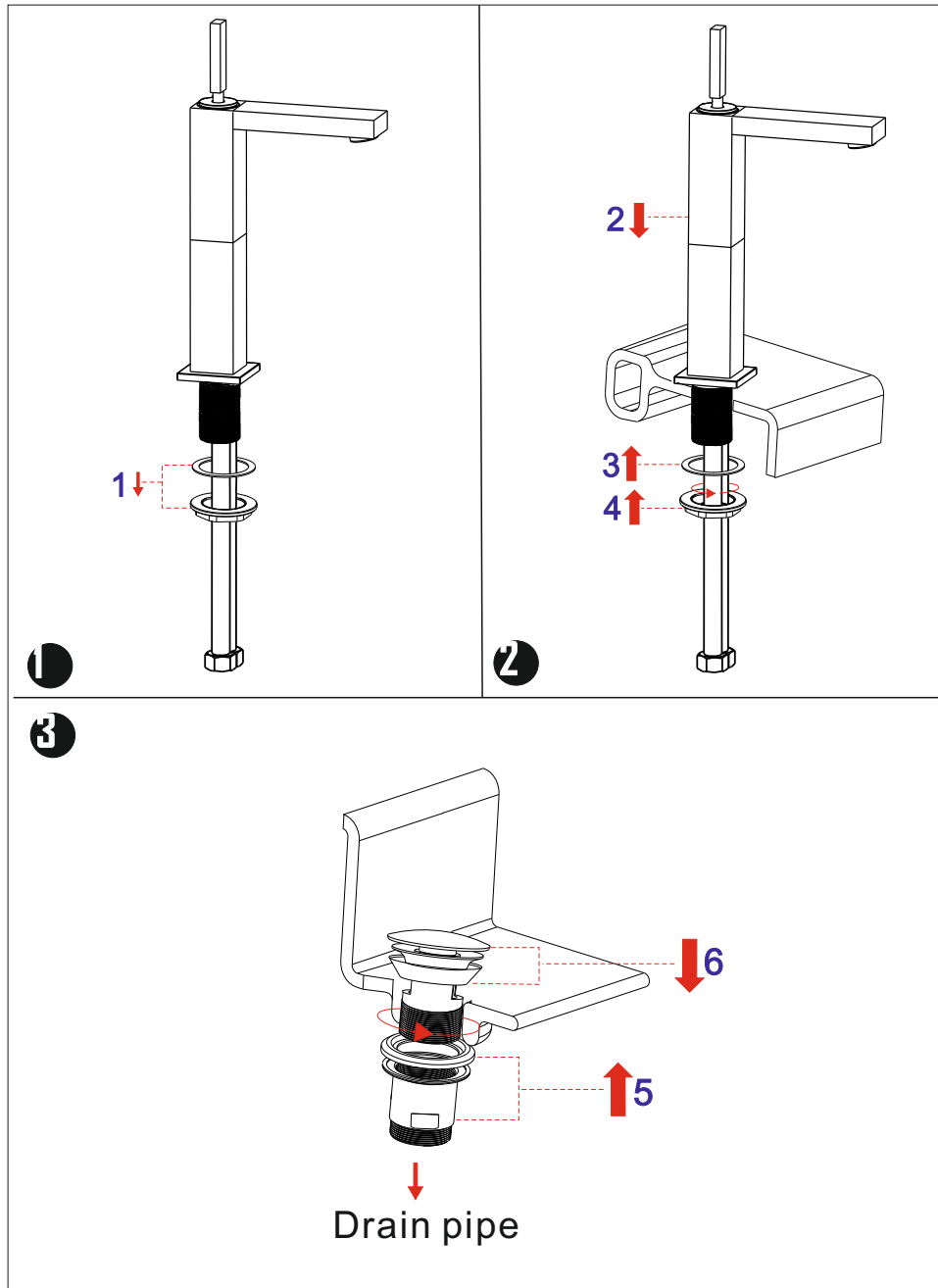
Please read this instruction carefully to avoid any difficulty during installation.



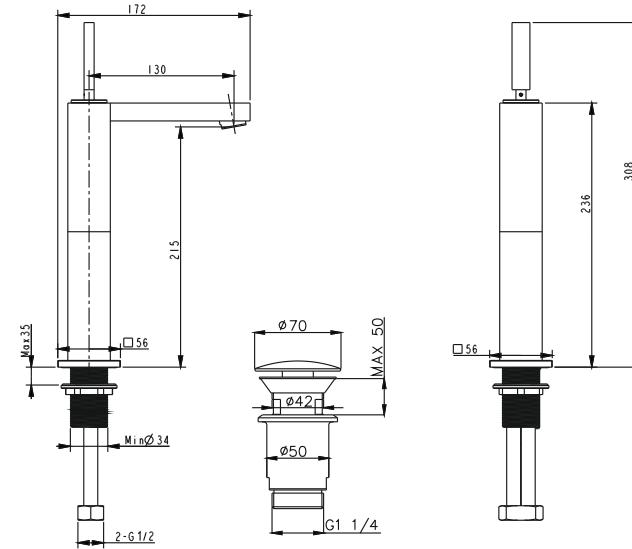
## Components List

No.	Component	Material	Quantity
1	Handle	BRASS	1
2	Female allen screw	SS304	1
3	O-ring	NBR	1
4	Cover	BRASS	1
5	Washer		1
6	Cartridge fastener	BRASS	1
7	O-ring	NBR	1
8	Ceramic cartridge		1
9	Main body	BRASS	1
10	Setting pin	BRASS	3
11	Flpe	BRASS	1
12	Fastening washer	SUS304	1
13	Fastening nut	BRASS	1
14	Fastening bolt	SUS304	1
15	Seat		1
16	Rubber fastening washer	NBR	1
17	O-ring	NBR	1
18	Fastening nut	BRASS	1
19	Flpe	BRASS	1
20	Flexible connection hose		2
21	Fastening pin	SUS304	2
22	O-ring	NBR	2
23	Spout	BRASS	1
24	Female allen screw	SS304	2
25	Flat washer	NBR	1
26	Aerator core		1
27	Aerator coat		1
28	Pop-up waste		1

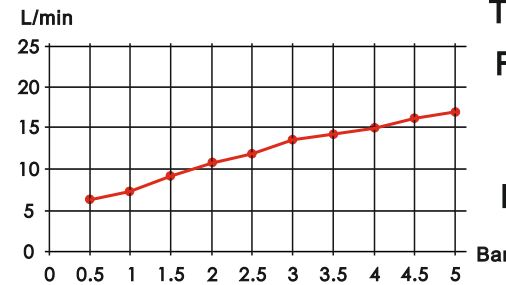
## Installation Step



## Installation Fig



## Flow rate Curves



Test pressure: 1.6MPa (16bar)

Flow pressure:

Min 0.05MPa

Max 1.60MPa

Recommended pressure:

0.1MPa to 0.8MPa (1 to 8 bar)

## Note

1. Ensure to clean the water supply pipe before installing to avoid being jammed.
2. The cold-water supply must be connected on the right and the hot-water supply on the left.
3. Check the installing dimension according to the Figure and ensure it is installed correctly.
4. Hot-water inlet must not be over 80°C.