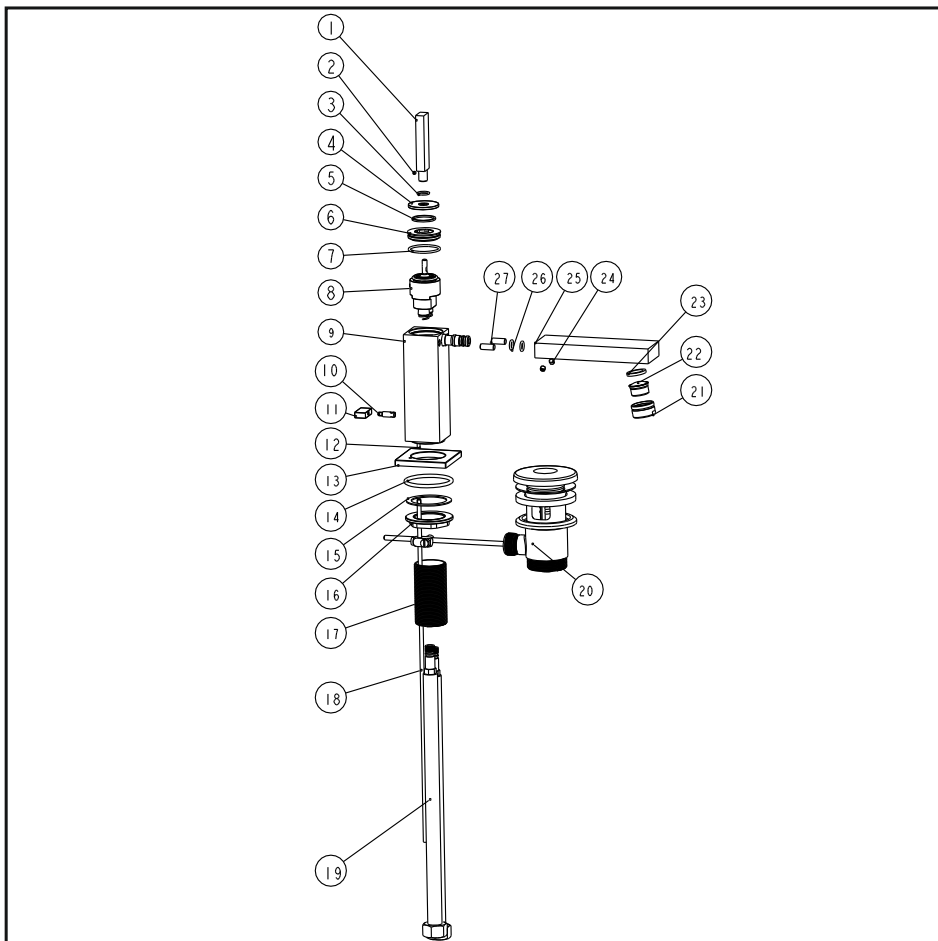


# Basin mixer

## Installation Instruction

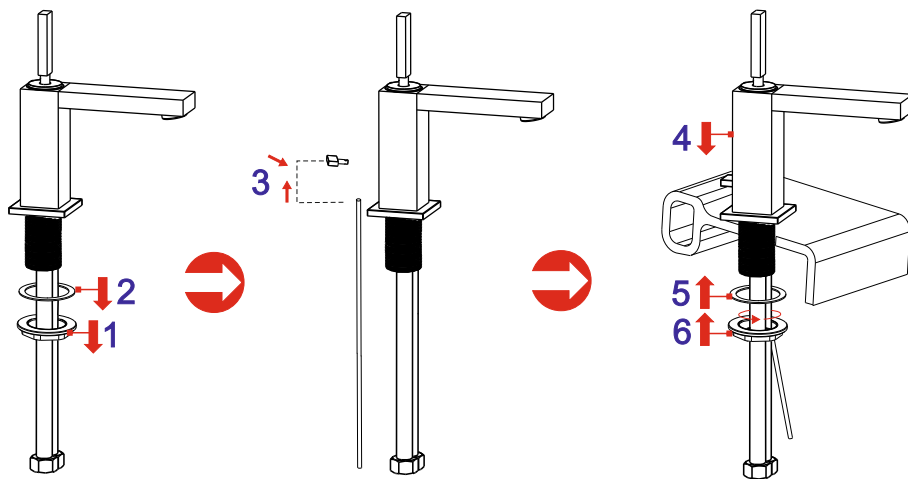
Please read this instruction carefully to avoid any difficulty during installation.



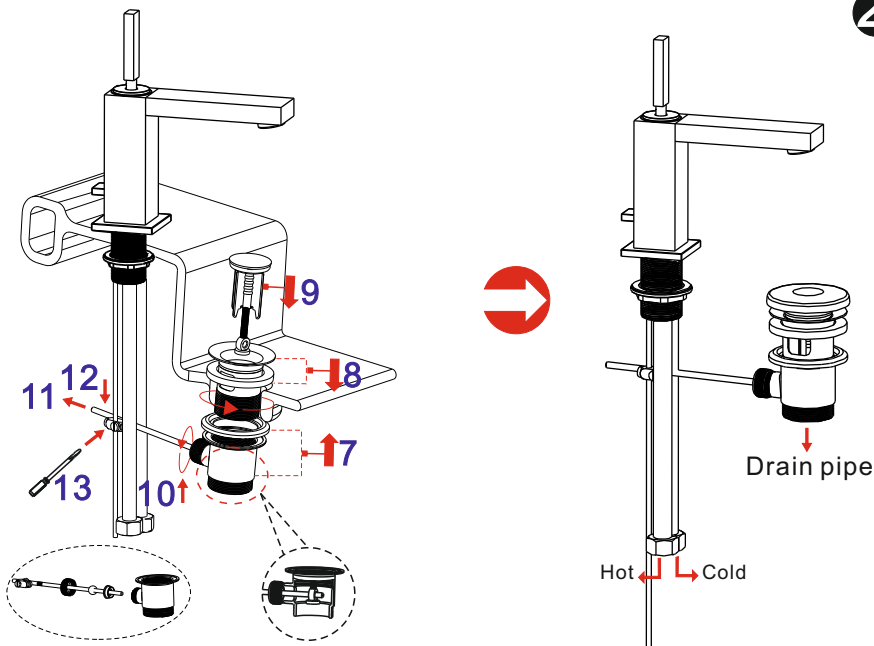
## Components List

No.	Component	Material	Quantity
1	Handle	BRASS	1
2	Female allen screw	S.S304	1
3	O-ring	NBR	1
4	Escutcheon	BRASS	1
5	Washer		1
6	Cartridge fastener	BRASS	1
7	O-ring	NBR	1
8	Ceramic cartridge		1
9	Main body	BRASS	1
10	Connecting rod	BRASS	1
11	Pop-up knob	BRASS	1
12	Setting pin	BRASS	1
13	Seat		1
14	O-ring	NBR	1
15	Rubber washer	NBR	1
16	Fastening nut	BRASS	1
17	Pipe	BRASS	1
18	Pop-up rod	BRASS	1
19	Flexible connection hose		2
20	Pop-up waste		1
21	Aerator coat		1
22	Aerator core		1
23	Flat washer	NBR	1
24	Screw	S.S304	2
25	Spout	BRASS	1
26	O-ring	NBR	2
27	Pin	SUS304	2

## Installation Step

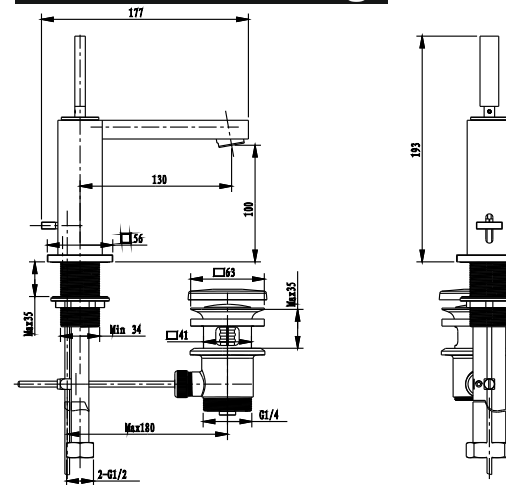


1

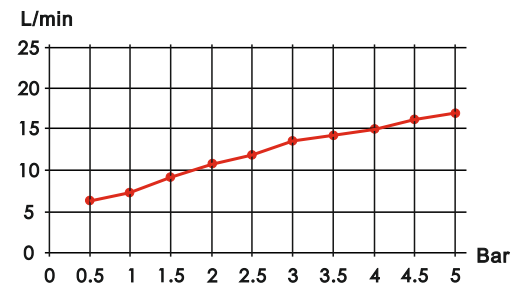


2

## Installation Fig



## Flow rate Curves



Test pressure: 1.6MPa (16bar)

Flow pressure:

Min 0.05MPa

Max 1.60MPa

Recommended pressure:

0.1MPa to 0.8MPa (1 to 8 bar)

## Note

1. Ensure proper cleaning of the water supply pipe before installation to avoid any jammed.
2. The cold-water supply must be connected on the right and the hot-water supply must be connected to the left.
3. Check the installation dimensions according to the Figure and ensure it is installed correctly.
4. Hot-water inlet temperature must not be over 80°C.