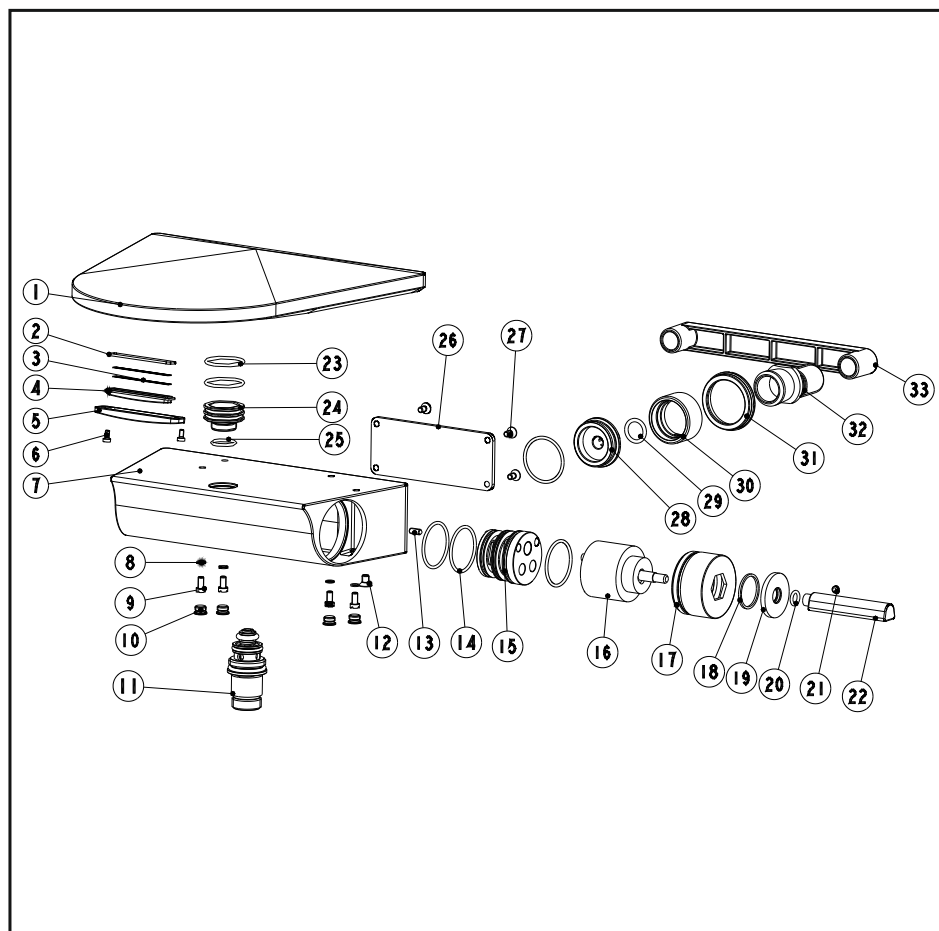


Bath/shower mixer

Installation Instruction

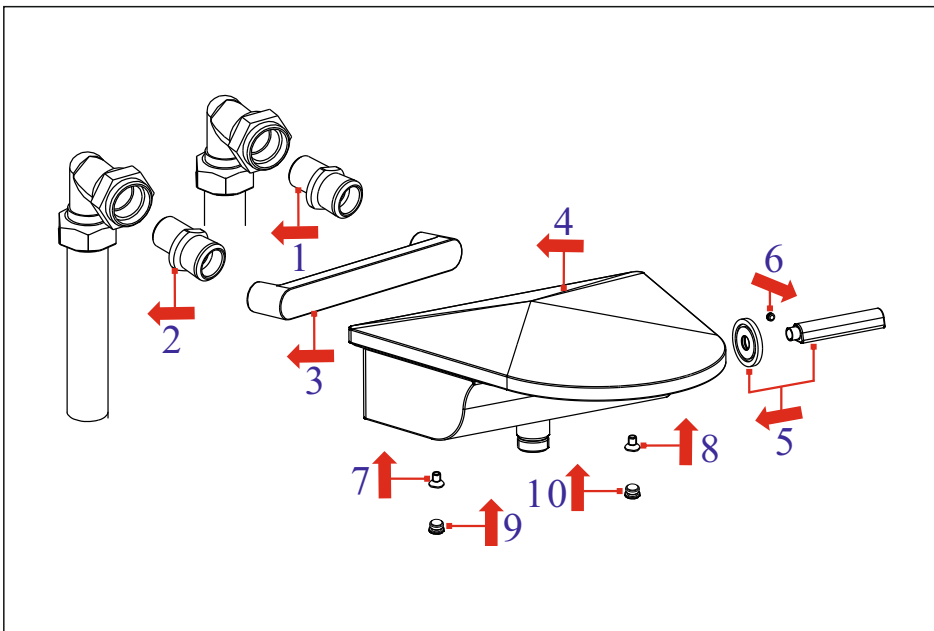
Please read this instruction carefully so as to avoid the installation difficulty.



Components List

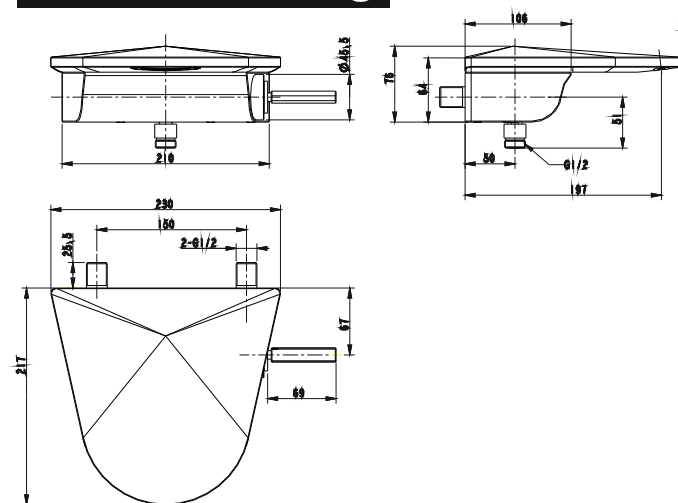
No.	Component	Quantity
1	Spout	1
2	Sealing strip	1
3	Net	2
4	Flow rate strengthener	1
5	Plate	1
6	Female allen screw	2
7	Main body	1
8	Spring shim	4
9	Cross-head screw	4
10	Plug	4
11	Diverting valve	1
12	Female allen screw	2
13	Female allen screw	1
14	O-ring	5
15	Cartridge seat	1
16	Ceramic cartridge	1
17	Cartridge fastener	1
18	Washer	1
19	Escutcheon	1
20	O-ring	1
21	Female allen screw	1
22	Handle	1
23	O-ring	2
24	Union	1
25	O-ring	1
26	Plate	1
27	Female allen screw	4
28	Union	2
29	O-ring	2
30	Union	2
31	Fastening nut	2
32	S-union	2
33	Rod for adjusting	1

Installation Step

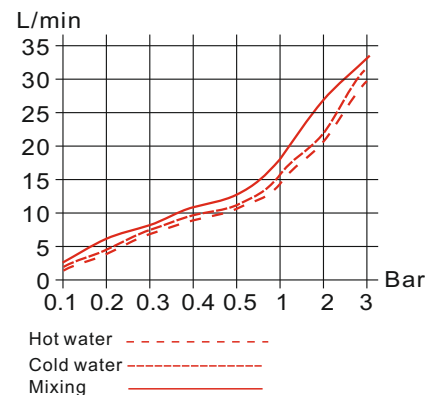


1. According to the fig, install the S-unions and make sure the distance between them.
2. Keep two S-unions in one level.
3. Inspect the distance between two S-unions with the adjusting rod.

Installation Fig



Flow rate Curves



Test pressure: 1.6MPa (16bar)

Flow pressure:

Min 0.05MPa

Max 1.60MPa

Recommended pressure:

0.1MPa to 0.8MPa (1 to 8 bar)

Note

1. Ensure to clean the water supply pipe before installing to avoid being jammed.
2. The cold-water supply must be connected on the right and the hot-water supply on the left.
3. Check the installing dimension according to the Figure and ensure it is installed correctly.
4. Hot-water inlet must not be over 80°C.