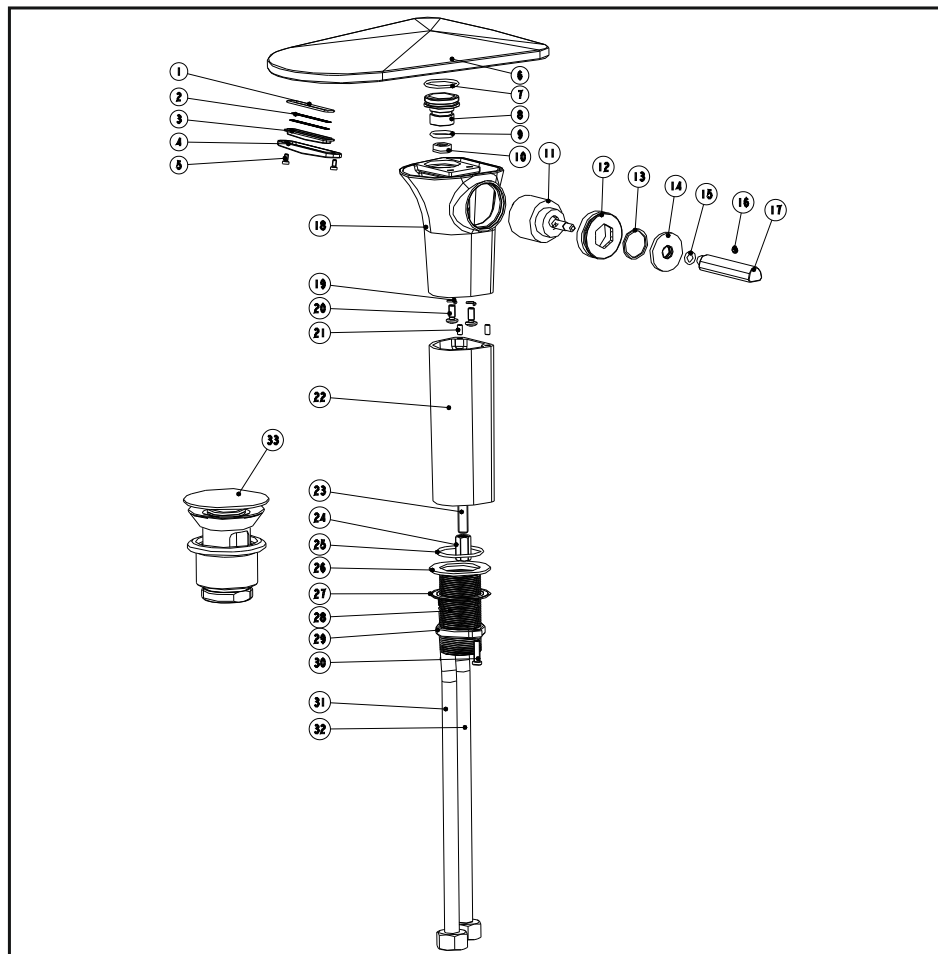


Raised basin mixer

Installation Instruction

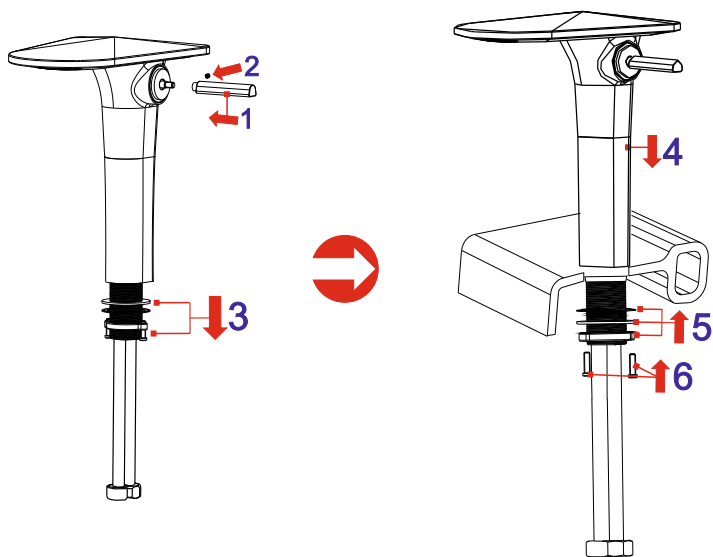
Please read this instruction carefully to avoid any difficulty during installation.



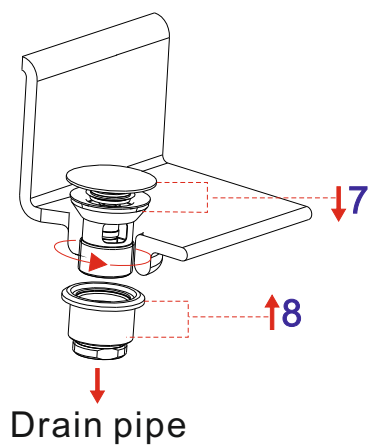
Components List

No.	Component	Quantity
1	Sealing ring	1
2	Net	2
3	Flow rate strengthener	1
4	Plate	1
5	Female allen screw	2
6	Spout	1
7	O-ring	1
8	Union	1
9	O-ring	1
10	Flow rate restricter	1
11	Ceramic cartridge	1
12	Fastener	1
13	Washer	1
14	Escutcheon	1
15	O-ring	1
16	Female allen screw	1
17	Handle	1
18	Main body	1
19	Spring shim	2
20	Cross-head screw	2
21	Setting pin	2
22	Longer pipe	1
23	Bolt	1
24	Fastening nut	1
25	O-ring	1
26	Washer	1
27	Fastening washer	1
28	Thread pipe	1
29	Fastening nut	1
30	Cross-head screw	2
31	Flexible connection hose (red)	1
32	Flexible connection hose (blue)	1
33	Pop-up waste	1

Installation Step



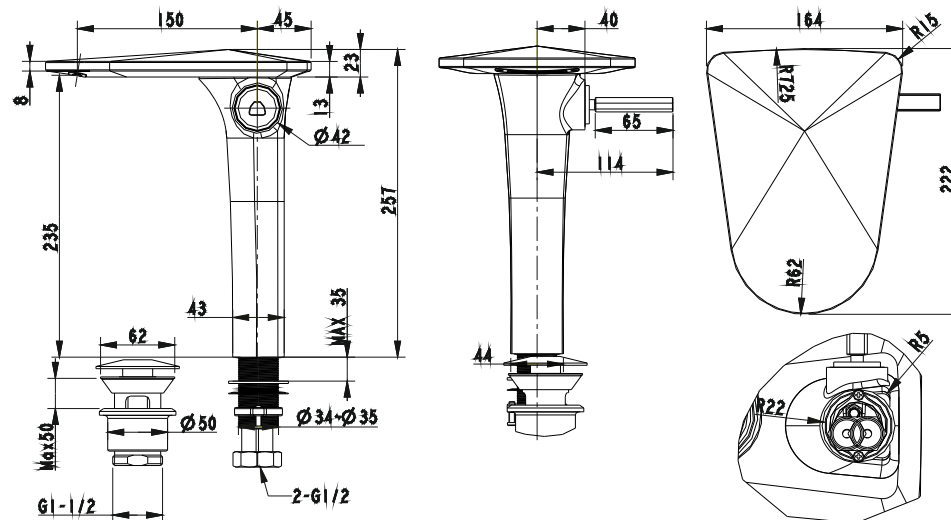
1



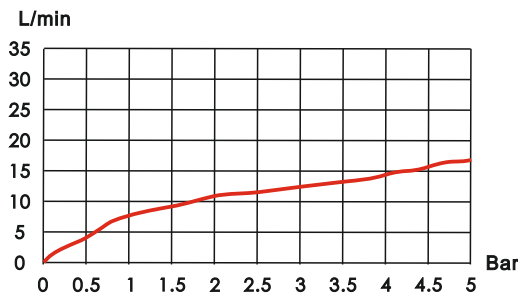
Drain pipe

2

Installation Fig



Flow rate Curves



Test pressure: 1.6MPa (16bar)

Flow pressure:

Min 0.05MPa

Max 1.60MPa

Recommended pressure:

0.1MPa to 0.8MPa (1 to 8 bar)

Note

1. Ensure proper cleaning of the water supply pipe before installation to avoid any jammed.
2. The cold-water supply must be connected on the right and the hot-water supply must be connected to the left.
3. Check the installation dimensions according to the Figure and ensure it is installed correctly.
4. Hot-water inlet temperature must not be over 80°C.