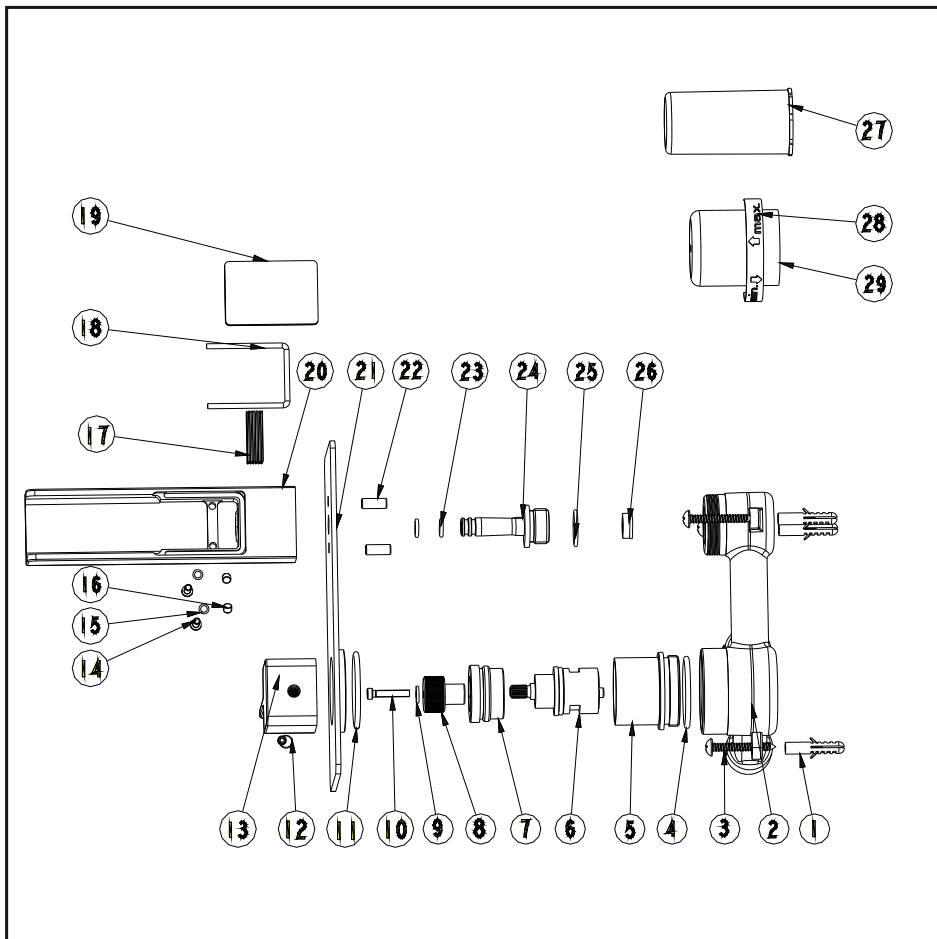


# Wall mounted basin mixer

## Installation Instruction

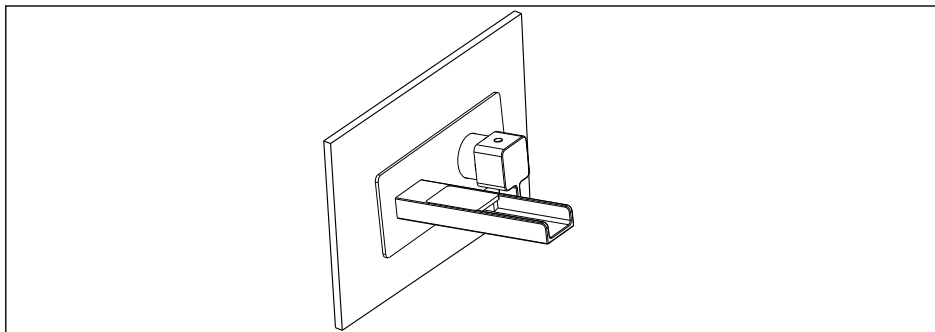
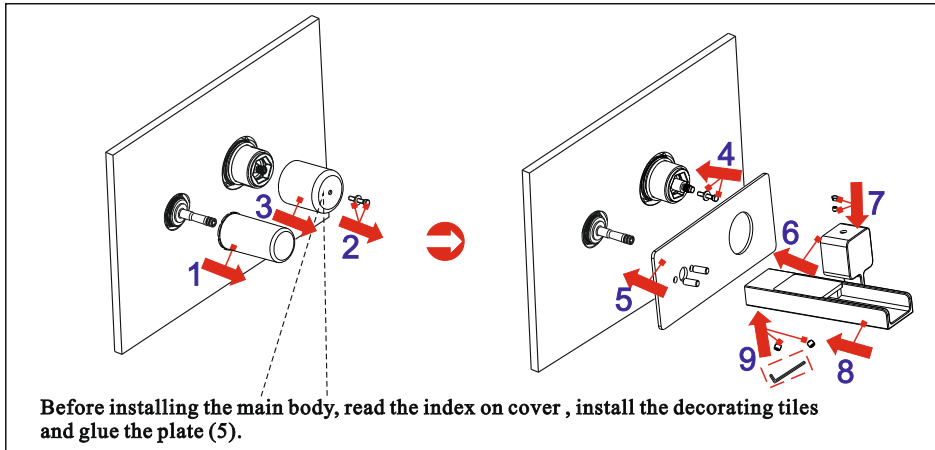
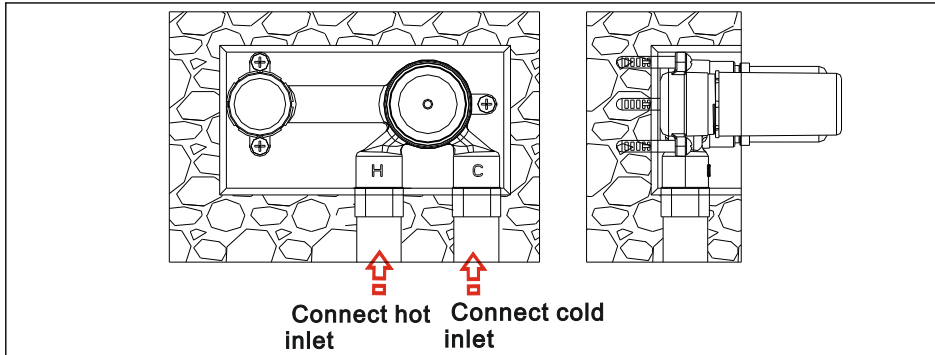
Please read this instruction carefully so as to avoid the installation difficulty.



## Components List

No.	Component	Quantity
1	Plastic sleeve	3
2	Main body	1
3	Cross-head screw	3
4	O-ring	1
5	Cartridge seat	1
6	Ceramic head part	1
7	Cartridge fastener	1
8	Union	1
9	Flat washer	1
10	Cross-head screw	1
11	Sealing strip	1
12	Plug	1
13	Handle	1
14	Cross-head screw	2
15	O-ring	2
16	Female allen screw	3
17	Net	1
18	O-ring	1
19	Decorating cover	1
20	Spout	1
21	Plate	1
22	Setting pin	2
23	O-ring	2
24	Union	1
25	O-ring	1
26	Flow rate controller	1
27	Safe cover for diverter	1
28	Index	1
29	Safe cover for cartridge	1

## Installation Step

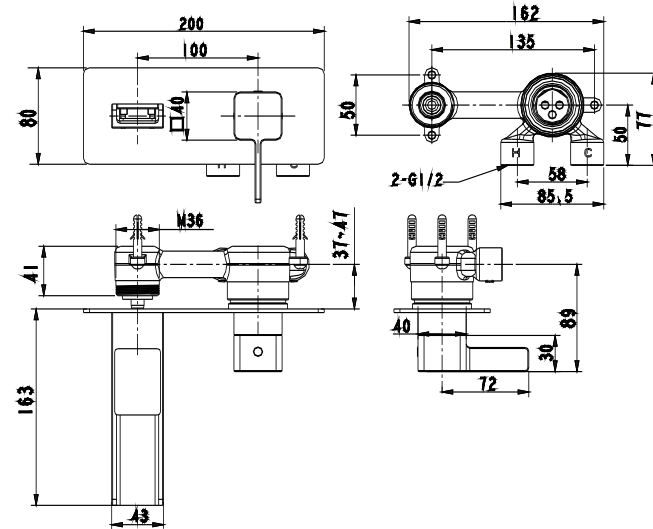


✳ See the fig for the position of the valve and inlet pipes.

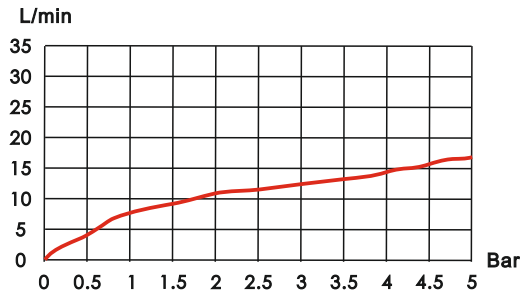
✳✳ **Test:**

Open the supply pipes, close the ceramic cartridge and check any leakage; open the ceramic cartridge and check the smooth water flow. Having tested, install the valve to the wall, take the safe cover apart and install the plate and handle.

## Installation Fig



## Flow rate Curves



Test pressure: 1.6MPa (16bar)

Flow pressure:

Min 0.05MPa

Max 1.60MPa

Recommended pressure:

0.1MPa to 0.8MPa (1 to 8 bar)

## Note

1. Ensure to clean the water supply pipe before installing to avoid being jammed.
2. The cold-water supply must be connected on the right and the hot-water supply on the left.
3. Check the installing dimension according to the Figure and ensure it is installed correctly.
4. Hot-water inlet must not be over 80°C.