

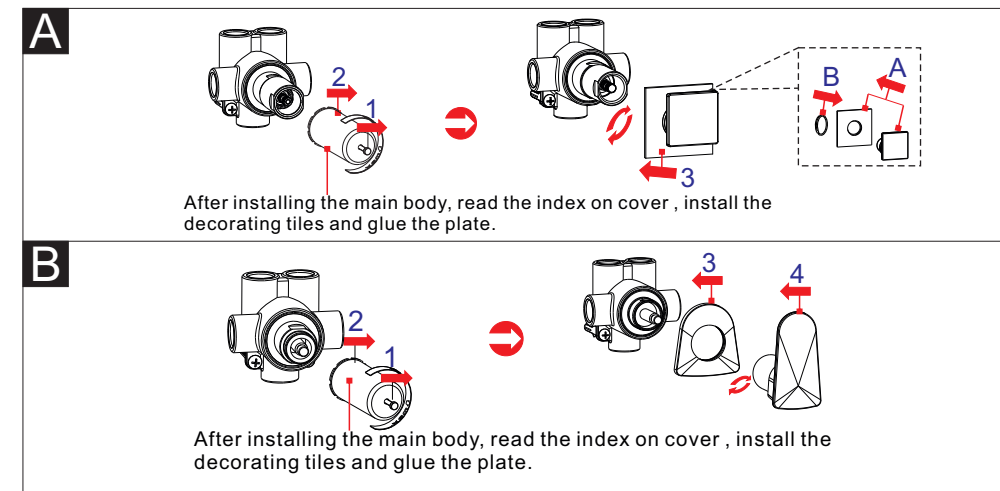
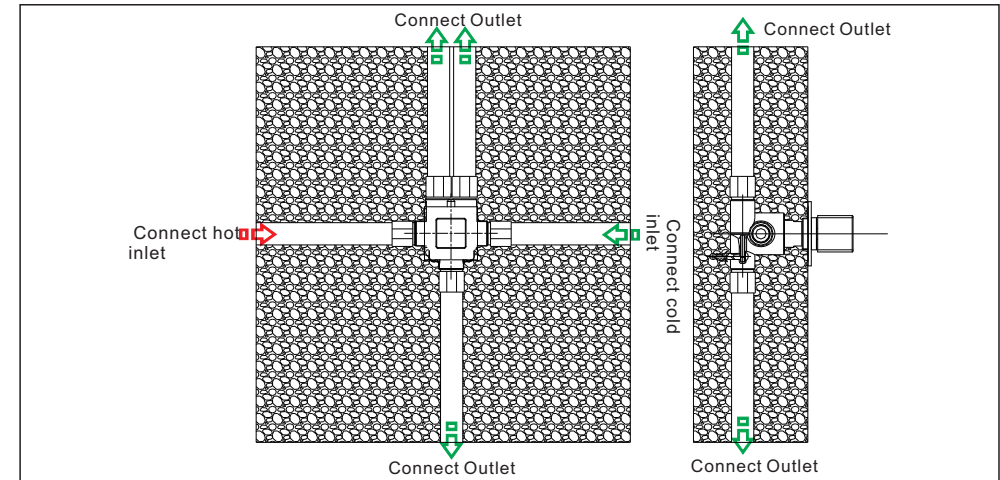
3-Way diverter

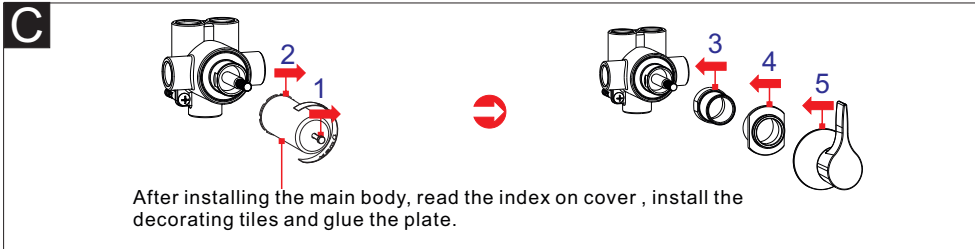
Installation Instruction

<p>JT024770P11</p> <p>A</p>	<p>JT027770P11</p> <p>B</p>
<p>JT029770P11</p> <p>B</p>	<p>JT034770P11</p> <p>C</p>
<p>JT035770P11</p> <p>iA_i</p>	<p>JT037770P11</p> <p>C</p>
<p>JT038770P11</p> <p>B</p>	

A indicates seeing figure A for installation.
 B indicates seeing figure B for installation.
 C indicates seeing figure C for installation.

Installation Step





1. See the fig, install the valve and connect the inlet.
2. When installing the valve, pay more attention to the index, in order to install the plate or the handle.
3. After installing the valve, test if it is any leakages with a high dynamic pressure for a period of 30 min, and glue the decoration.

Attention: according to the product you purchase, read its instruction drawing.