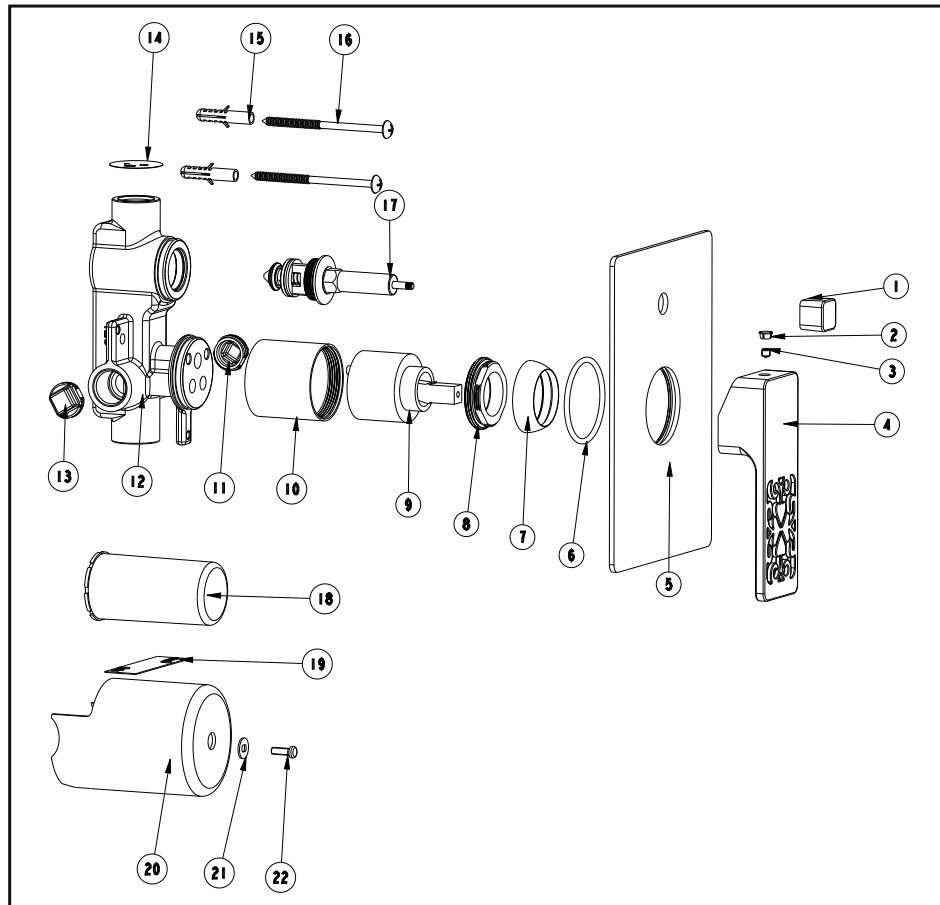


# Concealed bath/shower mixer

## Installation Instruction

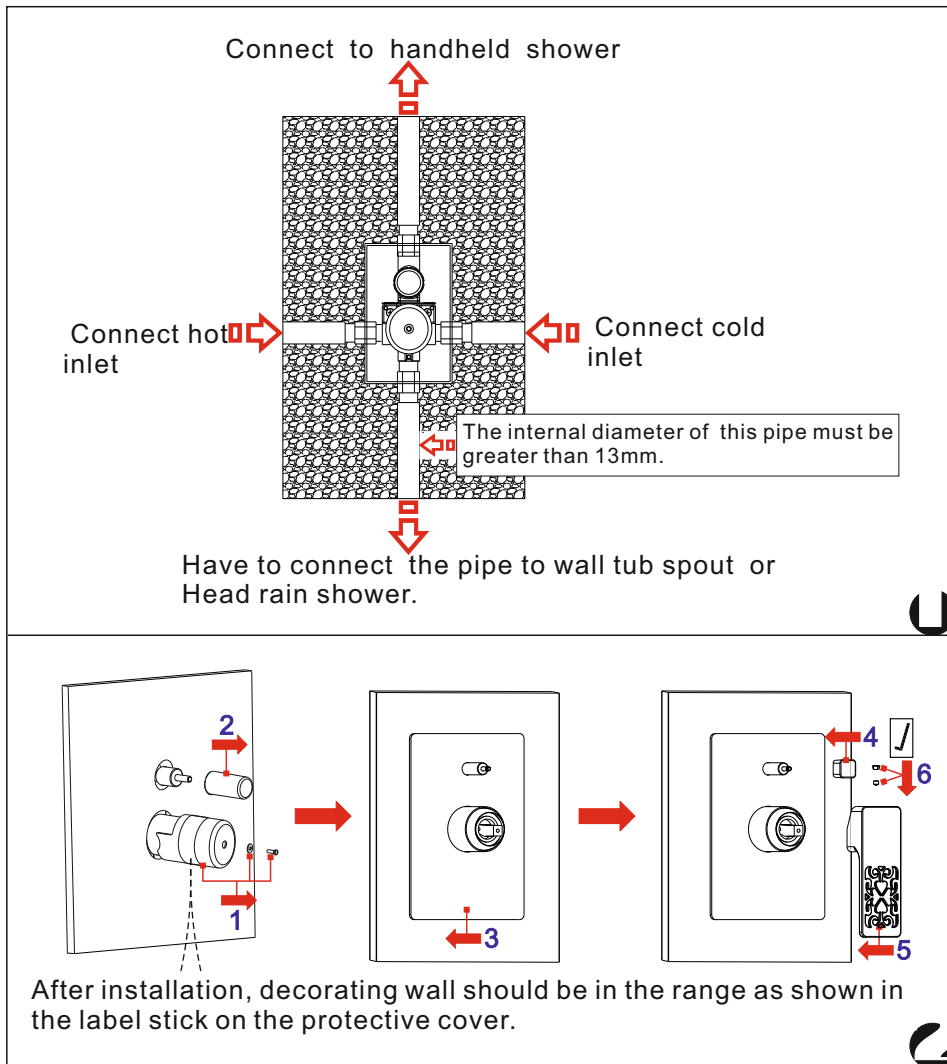
Please read this instruction carefully to avoid any difficulty during installation.



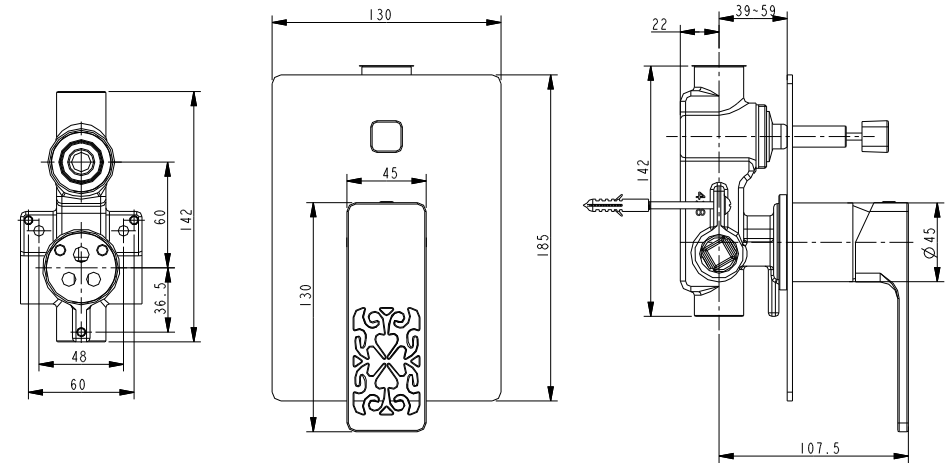
## Components List

No.	Component	Quantity
1	Knob	1
2	Index	1
3	Cross-head screw	1
4	Handle	1
5	Plate	1
6	Sealing strip	1
7	Cap	1
8	Cartridge fastener	1
9	Ceramic cartridge	1
10	Cover	1
11	Plug	1
12	Main body	1
13	Plug	1
14	Index	1
15	Plastic sleeve	2
16	Female allen screw	2
17	Diverter; Diverting valve	1
18	Valve protection cap	1
19	Index	1
20	Body protection cover	1
21	Flat washer	1
22	Cross-head screw	1

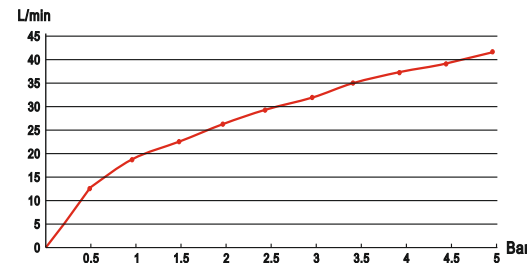
## Installation Step



## Installation Fig



## Flow rate Curves



Test pressure: 1.6MPa (16bar)

Flow pressure:

Min 0.05MPa

Max 1.60MPa

Recommended pressure:

0.1MPa to 0.8MPa (1 to 8 bar)

## Note

1. Ensure proper cleaning of the water supply pipe before installation to avoid any jammed.
2. The cold-water supply must be connected on the right and the hot-water supply must be connected to the left.
3. Check the installation dimensions according to the Figure and ensure it is installed correctly.
4. Hot-water inlet temperature must not be over 80°C.

✿ Read the Installation Fig and confirm the installing position.

✿ ✿ **Test:**

Open the supply pipes, close the ceramic cartridge and check the connections for leakage; open the ceramic cartridge and check the smooth water flow. Decorate the wall after checking and remove the safe cover. Install the escutcheon and handle.