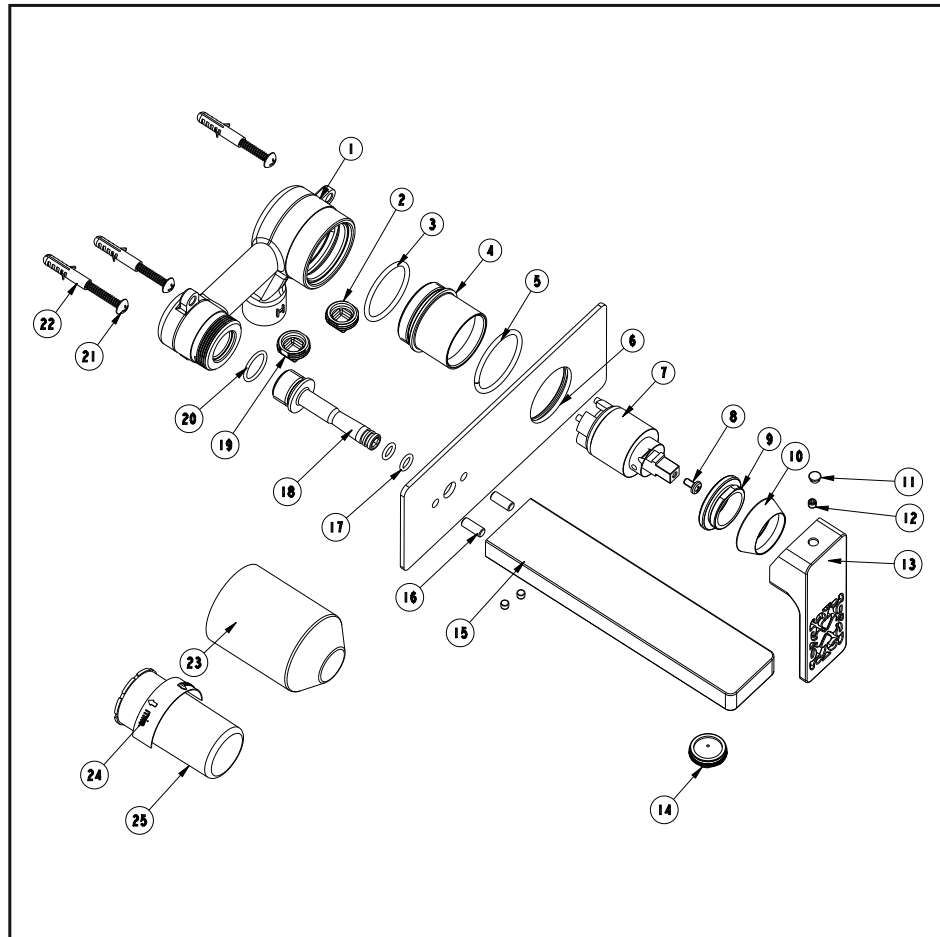


Wall mounted basin mixer

Installation Instruction

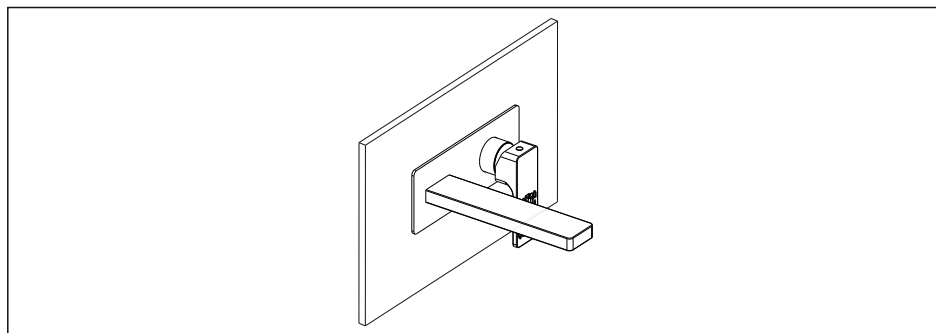
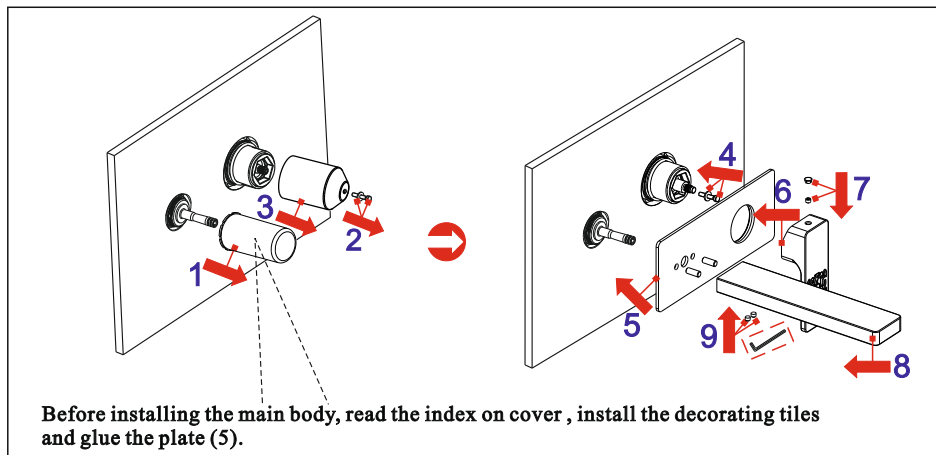
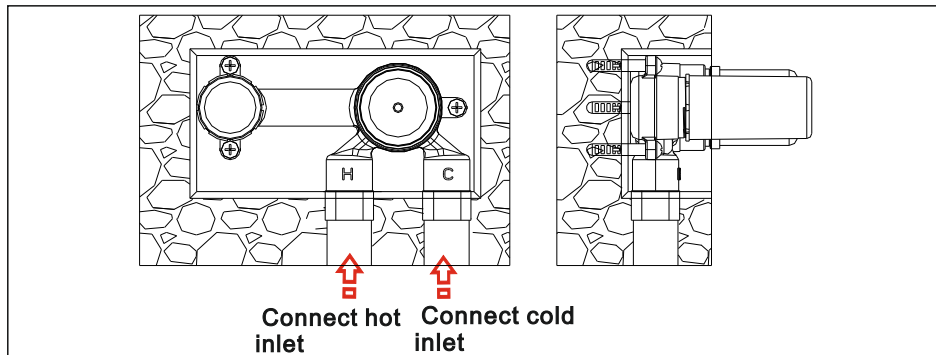
Please read this instruction carefully so as to avoid the installation difficulty.



Components List

No.	Component	Quantity
1	Main body	1
2	Plug	1
3	O-ring	1
4	Cover	1
5	Sealing strip	1
6	Plate	1
7	Ceramic cartridge	1
8	Cross-head screw	1
9	Cartridge fastener	1
10	Cap	1
11	Plug	1
12	Cross-head screw	3
13	Handle	1
14	Aerator core	1
15	Spout	1
16	Setting pin	2
17	O-ring	2
18	Water port takeover	1
19	Plug	1
20	O-ring	1
21	Self-tapping screws	3
22	Plastic sleeve	3
23	Body protection cover	1
24	Index	1
25	Valve protection cap	1

Installation Step

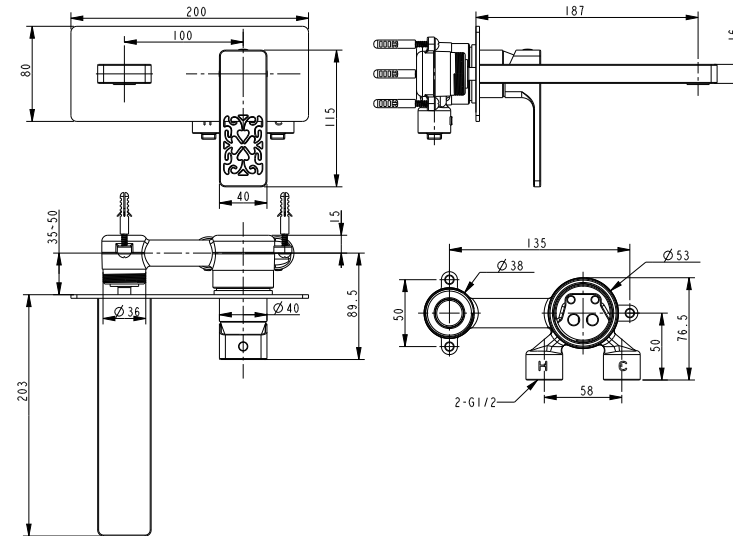


* See the fig for the position of the valve and inlet pipes.

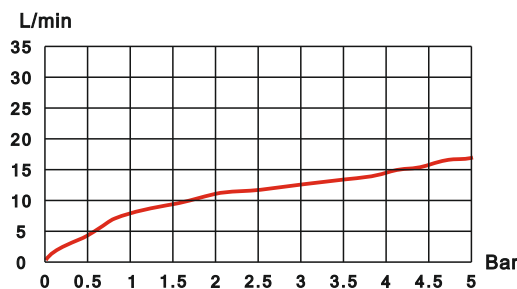
* * **Test:**

Open the supply pipes, close the ceramic cartridge and check any leakage; open the ceramic cartridge and check the smooth water flow. Having tested, install the valve to the wall, take the safe cover apart and install the plate and handle.

Installation Fig



Flow rate Curves



Test pressure: 1.6MPa (16bar)

Flow pressure:

Min 0.05MPa

Max 1.60MPa

Recommended pressure:

0.1MPa to 0.8MPa (1 to 8 bar)

Note

1. Ensure proper cleaning of the water supply pipe before installation to avoid any jammed.
2. The cold-water supply must be connected on the right and the hot-water supply must be connected to the left.
3. Check the installation dimensions according to the Figure and ensure it is installed correctly.
4. Hot-water inlet temperature must not be over 80°C.