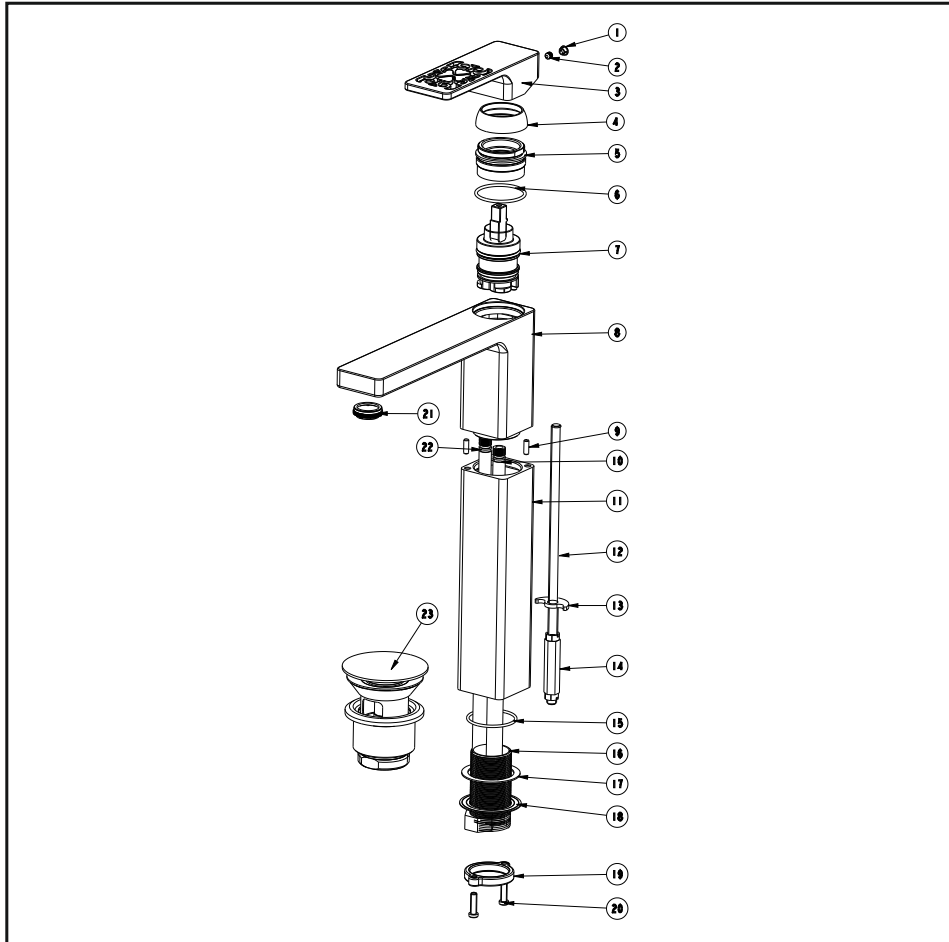


Raised basin mixer

Installation Instruction

Please read this instruction carefully to avoid any difficulty during installation.



Components List

No .	Component	Quantity
1	Plug	1
2	Female allen screw	1
3	Handle	1
4	Cap	1
5	Cartridge fastener	1
6	O-ring	1
7	Ceramic cartridge	1
9	Main body	2
10	Pin	1
11	Flexible connection hose	1
12	Long pipe	1
13	Bolt fixing bolt	1
14	fastening washer	1
15	Fastening nut	1
16	Cap	1
17	Thread pipe	1
18	Washer	2

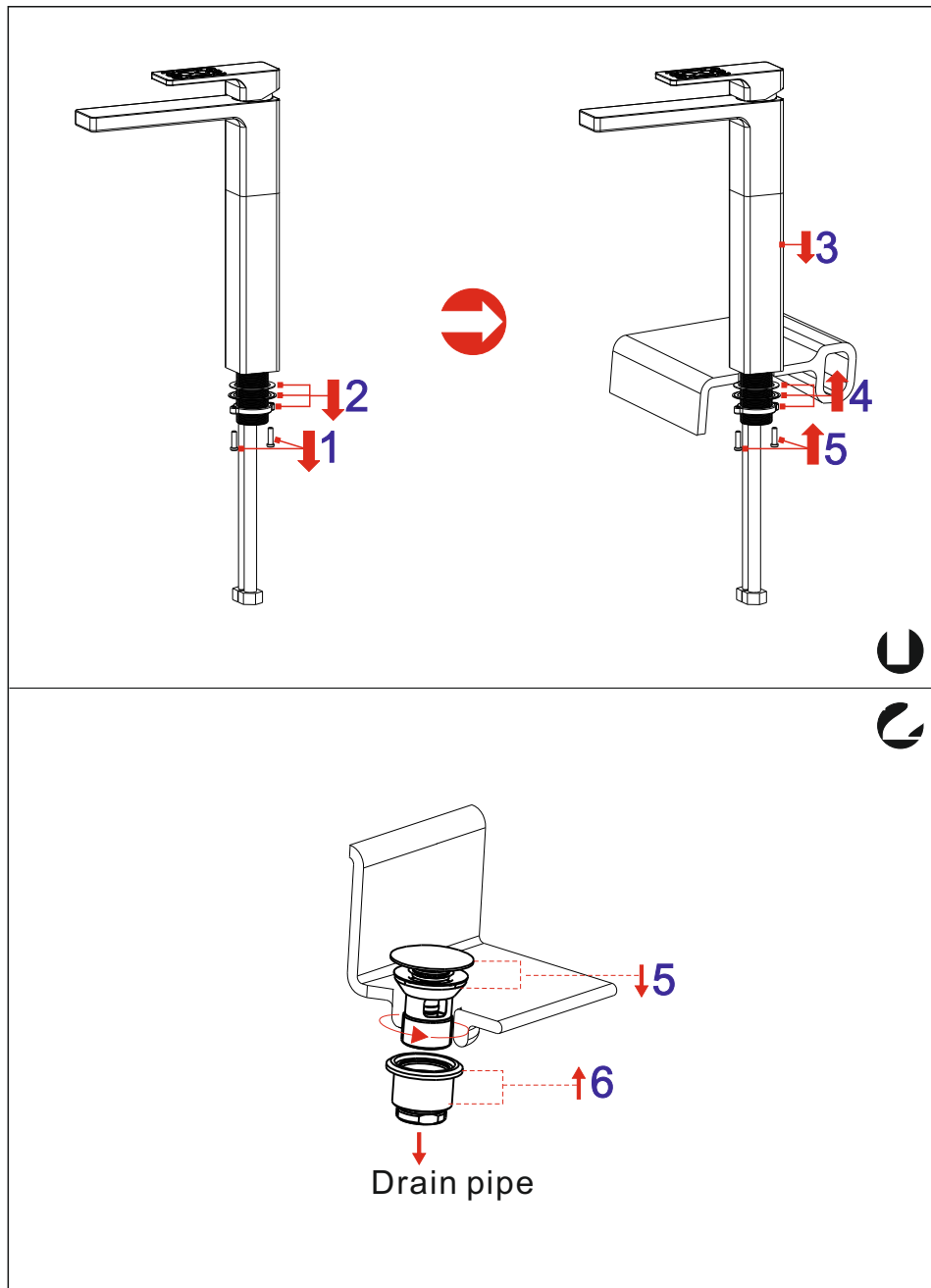
21	Wompression washer	1
22	Fastening nut	1
23	Cross-head screw	1

Aerator core

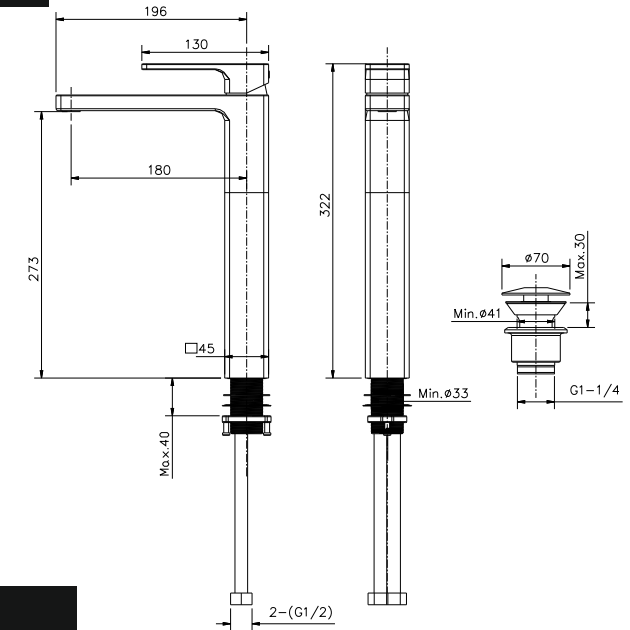
Flexible connection hose

Pop-up waste set

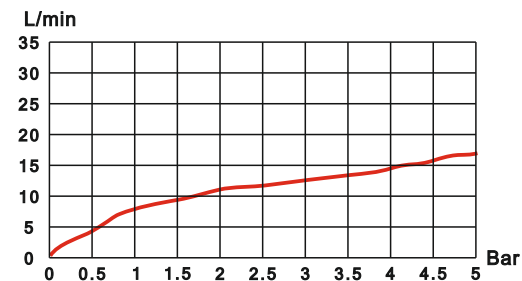
Installation Step



Installation Fig



Flow rate Curves



Test pressure: 1.6MPa (16bar)
 Flow pressure:
 Min 0.05MPa
 Max 1.60MPa
 Recommended pressure:
 0.1MPa to 0.8MPa (1 to 8 bar)

Note

1. Ensure proper cleaning of the water supply pipe before installation to avoid any jammed.
2. The cold-water supply must be connected on the right and the hot-water supply must be connected to the left.
3. Check the installation dimensions according to the Figure and ensure it is installed correctly.
4. Hot-water inlet temperature must not be over 80°C.