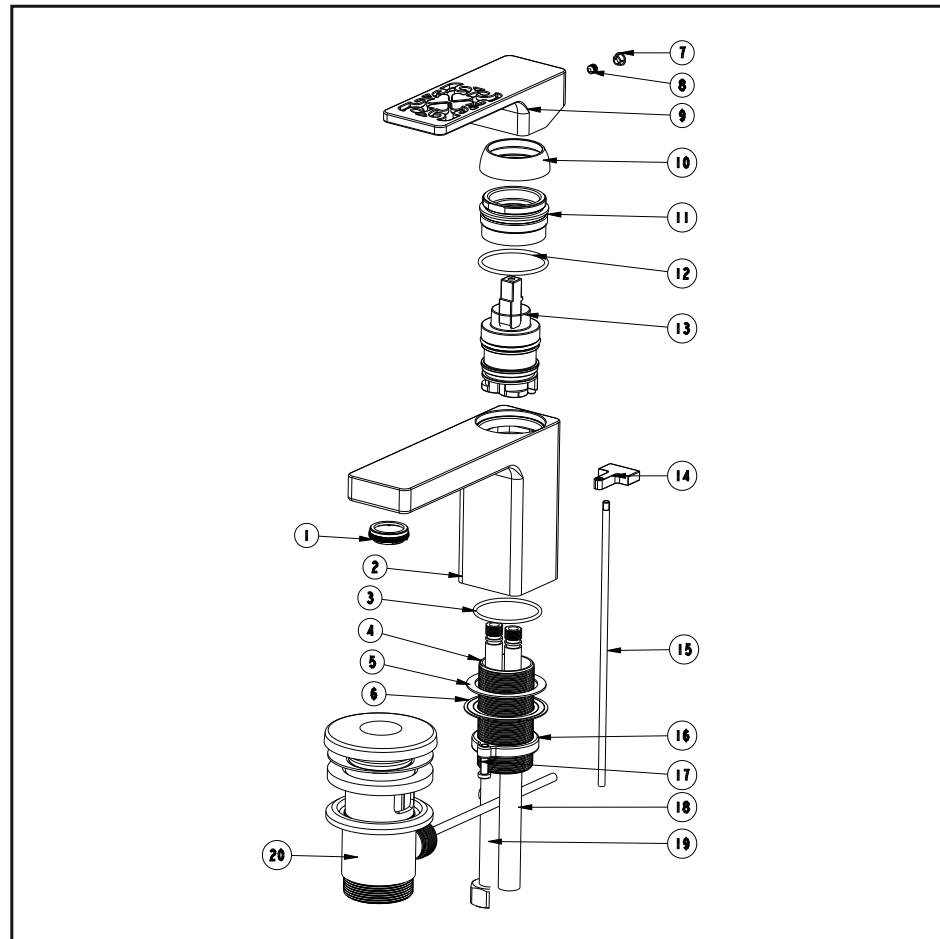


Basin mixer

Installation Instruction

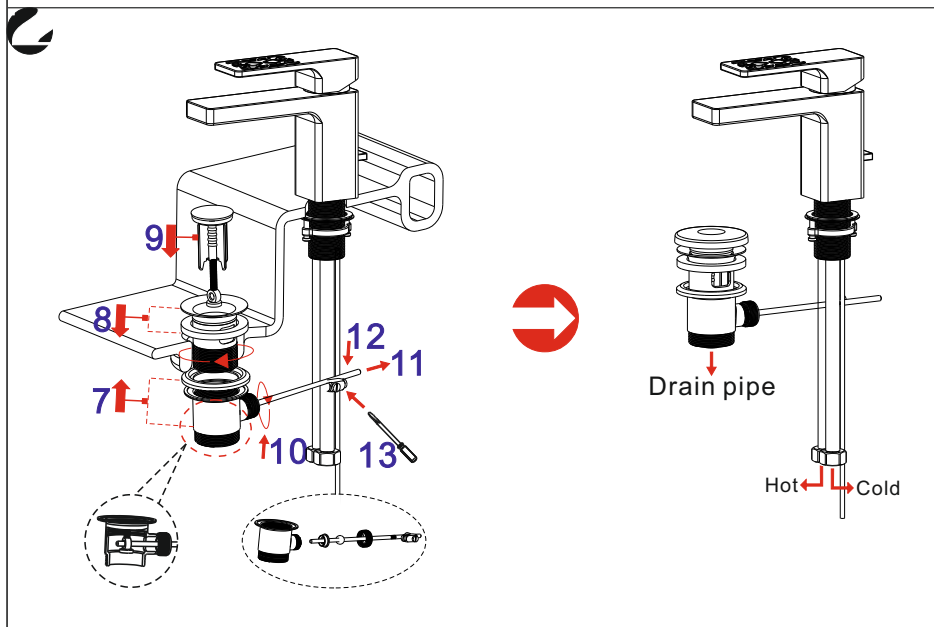
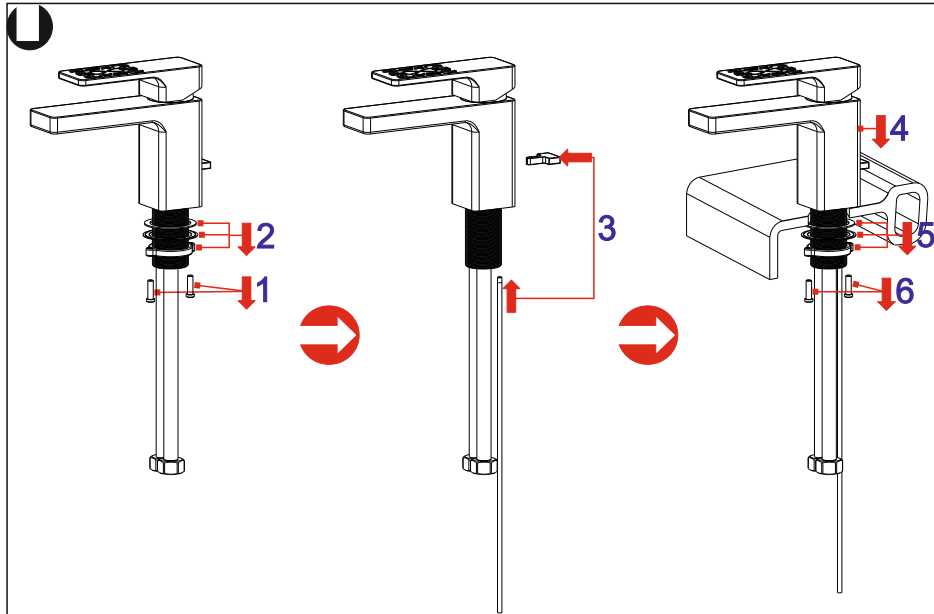
Please read this instruction carefully to avoid any difficulty during installation.



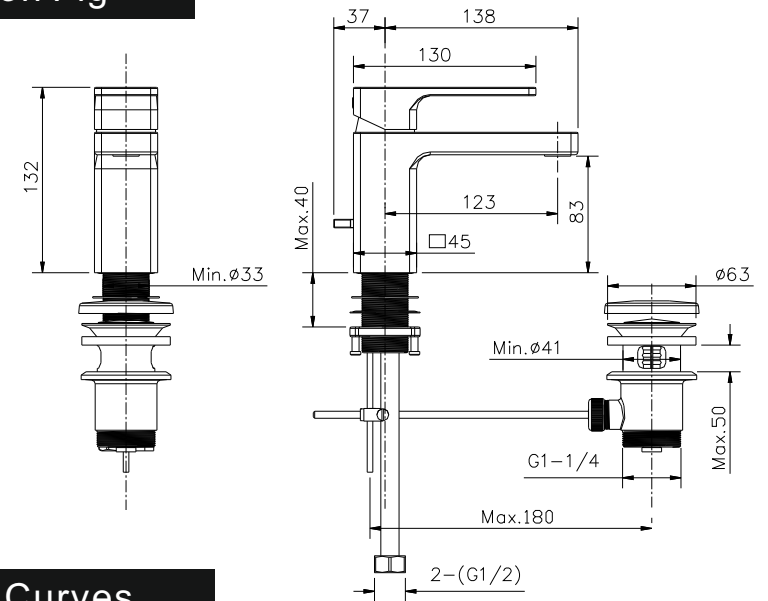
Components List

No .	Component	Quantity
1	Aerator core	1
2	Main body	1
3	Cap	1
4	Thread pipe	1
5	Washer	1
6	Wompression washer	1
7	Plug	1
8	Female allen screw	1
9	Handle	1
10	Cap	1
11	Cartridge fastener	1
12	O-ring	1
13	Ceramic cartridge	1
14	Pop-up knob	1
15	Pop-up rod	2
16	Fastening nut	1
17	Cross-head screw	1
18	Flexible connection hose	
19	Flexible connection hose	
20	Pop-up waste set	

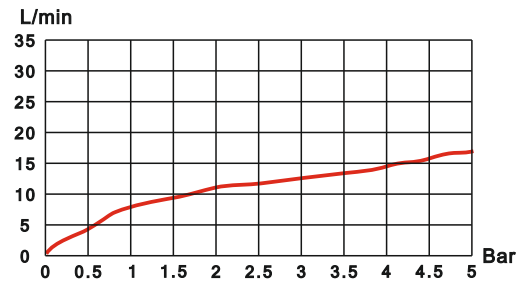
Installation Step



Installation Fig



Flow rate Curves



Test pressure: 1.6MPa (16bar)

Flow pressure:

Min 0.05MPa

Max 1.60MPa

Recommended pressure:

0.1MPa to 0.8MPa (1 to 8 bar)

Note

1. Ensure proper cleaning of the water supply pipe before installation to avoid any jammed.
2. The cold-water supply must be connected on the right and the hot-water supply must be connected to the left.
3. Check the installation dimensions according to the Figure and ensure it is installed correctly.
4. Hot-water inlet temperature must not be over 80°C.